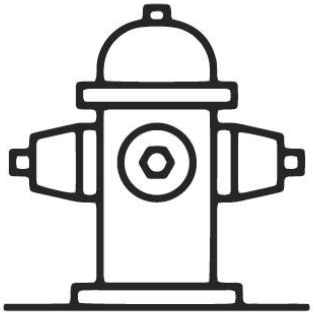




Human Interface Mate

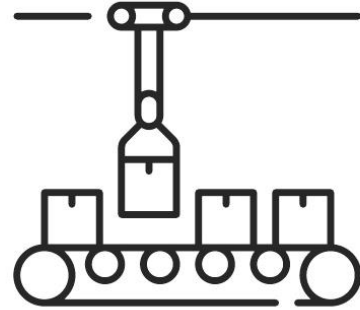
Helping Operators Excel

Industry 4.0



1st

Mechanization,
water power,
steam power



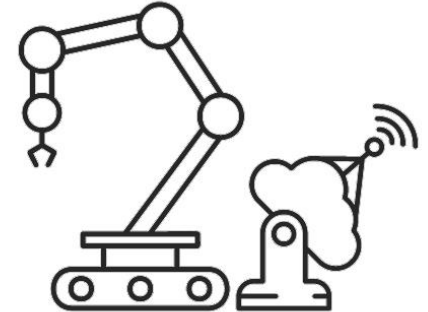
2nd

Mass production,
assembly line,
electricity



3rd

Computer and
automation



4th

Cyber Physical
Systems





“

The Human Interface Mate
transforms workstations into a
digital and **interactive** environment.
It is the ultimate **Operator Guidance**
technology.

”

Human Interface Mate

Guidance by AR

Realtime and contactless guidance by projections



Validation by Smart Sensor

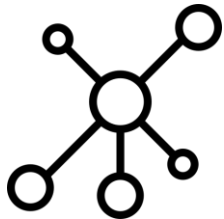
The smart sensor validates execution and provides feedback before an error occurs



Human Interface Mate

Hardware Integrations

Integration with PLC, Smart tooling, Machinery,...



Software integrations

Integration with the environment of the workstation for optimal information and traceability



Benefits



Quality

- Human Error Prevention
- Traceability
- Rework and Scrap Reduction
- Warranty and Replacement elimination

Benefits



Efficiency

- First Time Right
- Lot Size Flexibility
- Workforce Flexibility

Benefits



Human Capital

- Multi Skilled Operators
- Shortened Learning Curve
- Skill Dependent Guidance
- Reassurance of Performance

Benefits



Data

- Logging
- Dashboarding
- Traceability

HIM supporting discrete manufacturing



Arkite NV

- Patented Human Interface Mate product (HIM)
- International Installed Base: 100 applications in Europe and Asia
- HQ in Genk, Belgium
- Dedicated team of 20 employees
- Worldwide Partnerships on Technology, Sales, Services, ...
- Founded in 2015, Launch in 2016
 - *Roots going back to 2004 - Process Innovation Consulting*
- CEO: Johan Smeyers
- Board of Directors: Martin De Prycker, Gust Smeyers, Albert Follens, Marc Lambrechts, Katrin Geyskens, Ives De Saeger, Johan Smeyers



Hanne Neyens

+32 473 490 607 // hne@arkite.be

www.arkite.be