



Continua Health Alliance: The Next Generation of Personal Telehealth is Here

A non-profit, open industry alliance of the finest healthcare and technology companies in the world joining together in collaboration to improve the quality of personal healthcare.



“Our Mission is to establish an eco-system of interoperable personal health systems that empower people & organizations to better manage their health and wellness”

Infant



Amateur Athlete



Diet/Fitness Focused



Worried Well



Chronic Patient



Acute Recovery



Elderly Living Independently



CONTINUUM of LIFE

The Continua Health Alliance will enable a personal health eco-system that empowers individuals & families to better manage their own health and wellness across the continuum of life and care methods.

CONTINUUM of CARE GIVERS

New Parents



Fitness Wellness Coach



The Family



Home Nursing Professional



Doctor/NP/Nurse





- Alere
- Allion Test Labs, Inc.
- All Medicus Co., Ltd.
- American Heart Association
- Analog Devices
- Andago Ingenieria s.l.
- AppsHub, Inc.
- AT4 Wireless
- AT&T Mobility
- AViTA
- BiancaMed
- BIOSPACE Co., Ltd.
- Bluegiga Technologies Oy
- Boston Scientific
- Cambridge Consultants Ltd.
- Capital Health
- Card Guard AG
- Cardiff University
- Cardiomedix Inc.
- CELS, Ltd.
- Centre for Global eHealth Innovation
- Cerner Corporation
- Chiptech Limited
- Christus Health
- Chungwa Telecom Co., Ltd.
- Claricode, Inc.
- Computerized Screening, Inc.
- ConnectBlue AB
- Continuity Health
- Convergence Wireless, Inc.
- CSR plc
- CYPAK AB
- Cypress Semiconductor
- Dell
- Digi International
- Dossia Consortium
- Dovetail Health
- Duodecim Medical Publications
- Dynastream Innovations Inc.
- Ember Corporation
- Empirica GmbH
- Ericsson Nikola Tesla d.d.
- ETRI
- EuroTech, Inc.
- Fairbanks Scales
- FitLinxx
- Foundation for Research and Technology
- France Telecom R&D, LLC
- Freescale Semiconductor
- Frontline Test Equipment
- Fujitsu Limited
- Fullpower Technologies
- GC Healthcare Corp.
- GenerationOne, Inc.
- GlaxoSmithKline
- Google Inc.
- Hitachi, Ltd.
- Home Guardian, LLC
- Honeywell HomMed LLC
- Hosiden Corporation
- Industrial Technology Research Institute
- Infineon Technologies
- INFORSON Co., Ltd.
- Innomed Medical Zrt.
- In Practice Systems Limited
- Institute for Infocomm Research
- Institute of Biomedical
- InterComponentWare, Inc.
- KDDI
- Konami Sports and Life
- Lamprey Networks, Inc.
- LAXTHA Inc.
- LG CNS
- LG Electronics Inc.
- LifeGate, Inc.
- Lifescan
- Logic
- LS Research, LLC
- MEDCEL
- MedHelp International
- Medixine Oy
- MedSignals
- MedTech Systems Inc.
- Microlife Corporation
- Midmark Corporation
- Misys Healthcare Systems
- Monitray, LLC
- Motorola
- MIR- Medical International Research
- Murata Manufacturing Co., Ltd.
- Neusoft Medical Systems
- Nippon Telegraph and Telephone Corporation
- Nitto Denko Corporation
- Novo Nordisk
- Nuubo (Smart Solutions Tech)
- ON Semiconductor
- Oregon Medical Labs
- Oregon Scientific Inc.
- PA Consulting Group
- Pfizer
- Precor Fitness
- Proskauer Rose LLP
- Proteus Biomedical, Inc.
- RMD Networks
- Ryoyo Electro Corporation
- Sensor Technology & Devices Ltd
- Shimmer Research
- SHL Telemedicine
- Shorewood Packaging
- Silicon and Software Systems
- Smartlife Technology Ltd
- Sony Electronics Inc.
- Southern Nevada Wellness
- Stichting IMEC - Nederland
- Stollmann E+V GmbH
- STMicroelectronics
- TaiDoc Technology Corporation
- Tanita Corporation
- TechnoGym
- Tekoa Technologies Inc.
- Telbios, SpA
- Telecom Italia SpA
- Telefonica S.A.
- Telehealth Solutions Ltd.
- Telus Communications Company
- Terumo Corporation
- Textronics Inc.
- The Scottish Centre for Telehealth
- Toshiba Home Appliances Corporation
- Toumaz Technology Limited
- Triage Wireless Inc.
- TSB soluciones
- Tyco Electronics
- Tynetec Ltd
- UnitedHealth Group
- University of Miami - Miller School of Medicine
- Verizon
- VivoMetrics, Inc.
- VTT Technical Research Centre of Finland
- Westchester Institute for Human Development
- Whole Health Management
- Zarlink Semiconductor
- Zensys

- Personal health standards development
 - **Architecture**: defines overall technical framework
 - **Use cases**: define typical application scenario's
 - **Interoperability standards**: specify how devices can work seamlessly together in the applications - through defined suites of base standards from various sources
- Reference software creation
 - Shared development effort: members can swiftly and cost-effectively create Continua compliant products
 - Helps to deliver on the interoperability promise
- Market intelligence, collaboration and training
 - Community, sharing pre-competitive efforts

■ Testing and Certification

- Enables suppliers to verify correct implementation against a golden reference
- Helps to deliver on the interoperability promise

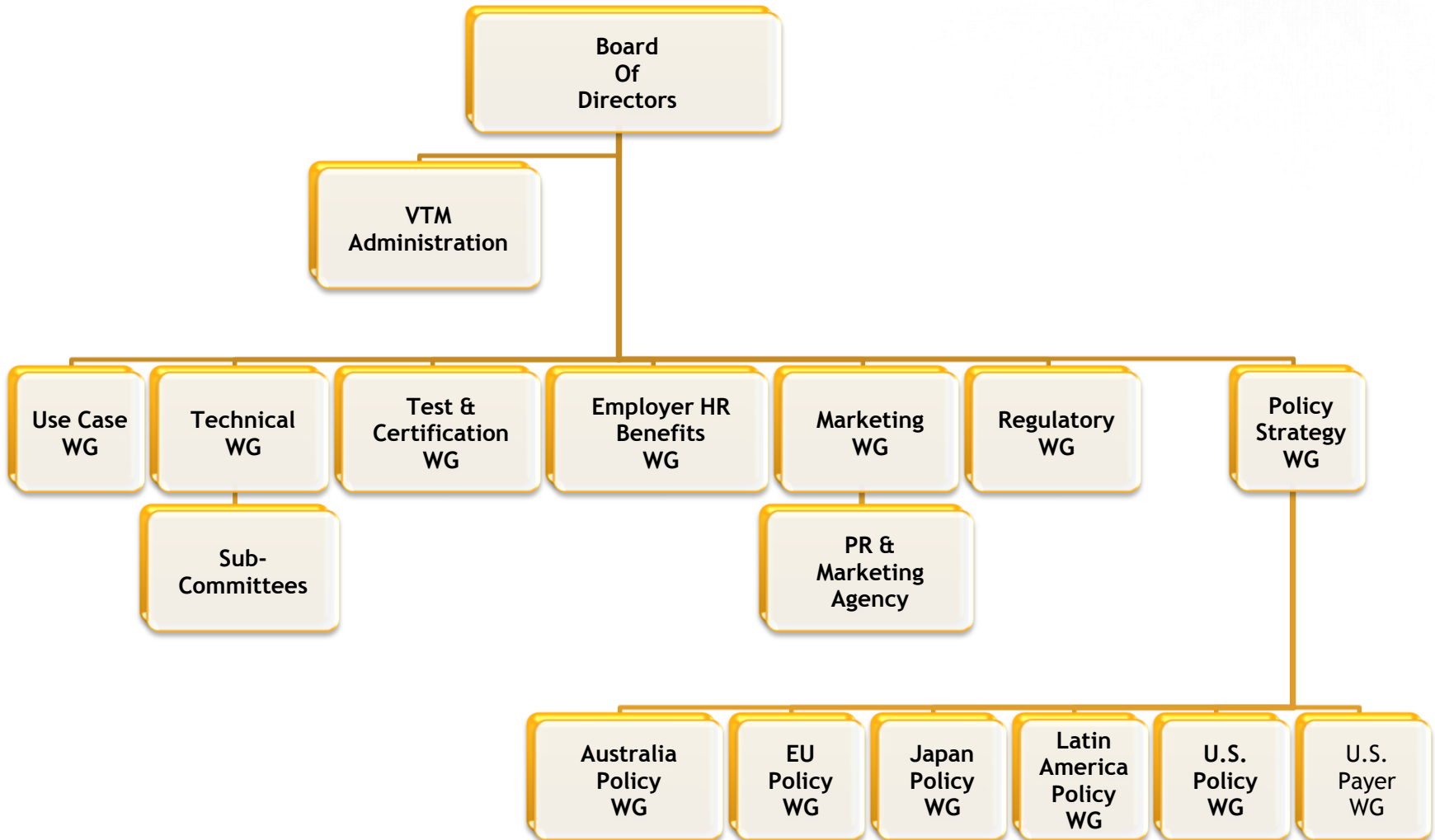
■ Marketing and Logo



- Logo testifies that a product is Continua - interoperable
- Furthers the Continua goals through promotion

■ Improving personal health prosperity conditions

- Help reduce institutional personal health barriers: National care system structures, Financial incentives, Responsibilities, Liability issues, Corporate employee health programs, Regulatory convergence, ...



- Worldwide today:
 - 1 billion adults overweight
 - 860 million chronic disease patients
 - 600 million elders age 60 or older
-
- 75-85% of healthcare spending is on chronic disease management



- **Health and Wellness** 1,000M adults overweight
 - “Worried well” vital sign monitoring:
 - Weight, Blood pressure, Glucose, Cholesterol, Activity
 - Future:
 - Extension of healthcare system into the home
 - Initial triage of non-emergency conditions (Vital signs; Images; Email / chat / video)
- **Disease Management** 860M chronic disease patients
 - Vital sign monitoring (remote patient monitoring)
- **Aging Independently** 600M elderly individuals
 - Basic life monitoring as appropriate (ADL):
 - Bed pressure (sleep), Bathroom sensor, Gas / water sensor, Emergency sensor

Disease Management Service Provider



Disease management nurse or home care nurse



Remote Patient Monitoring (RPM) Server

Home-based Remote Patient Monitoring (RPM) System



Patient



Vital Sign Devices

Continua xHR Interface (Data, Message, Security)



Healthcare Provider



Electronic Health Record System



Labs



EHR

Disease Management Service Provider



Disease management nurse or home care nurse



Remote Patient Monitoring (RPM) Server

Continua xHR Interface (Data, Message, Security)



Healthcare Provider



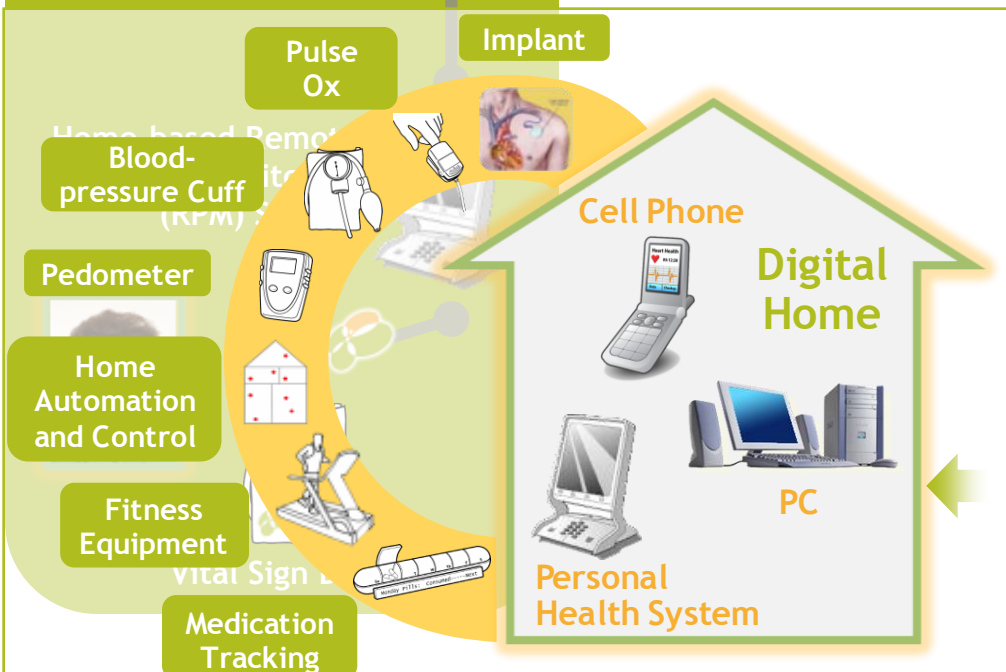
Electronic Health Record System

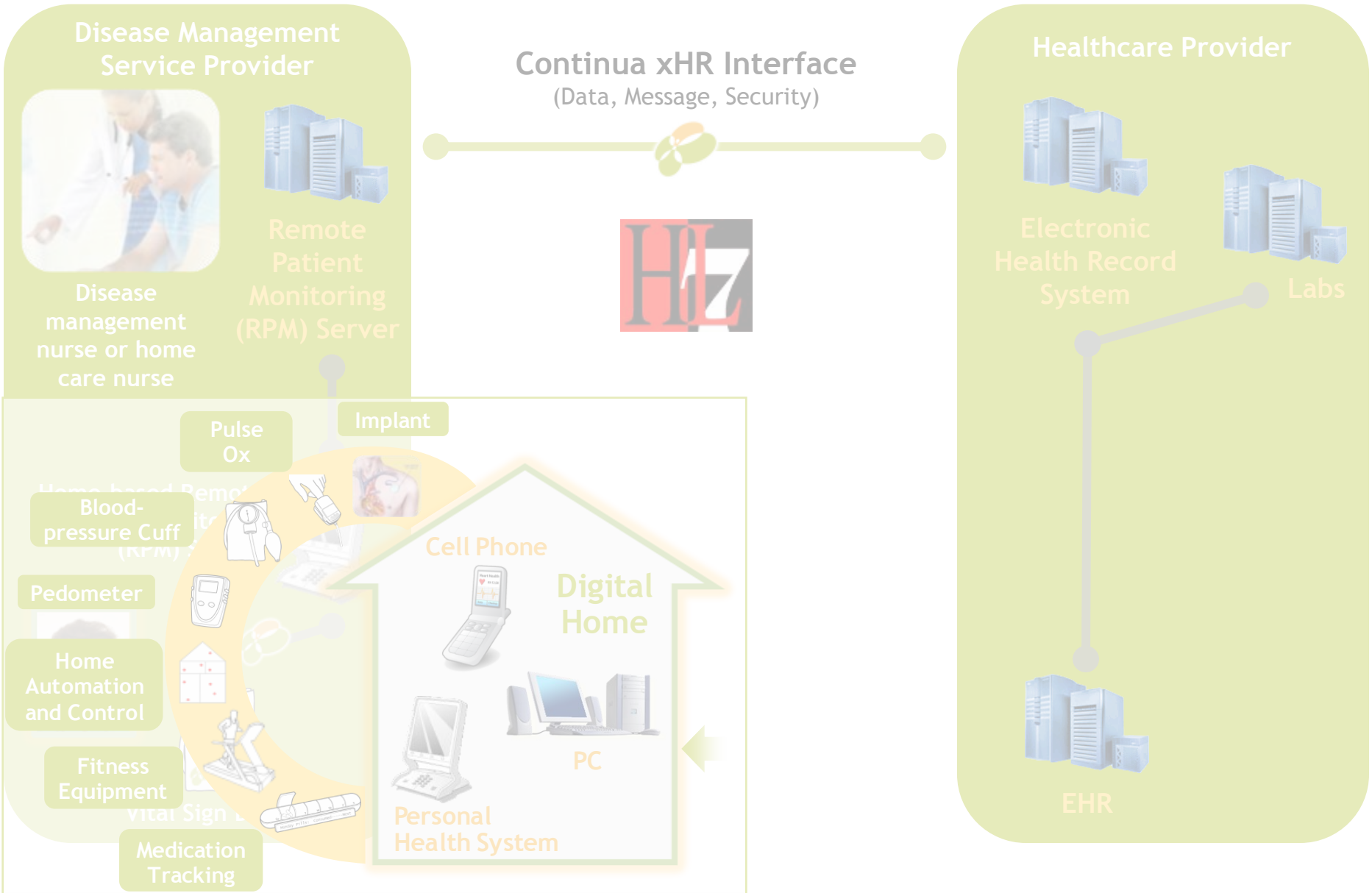


Labs



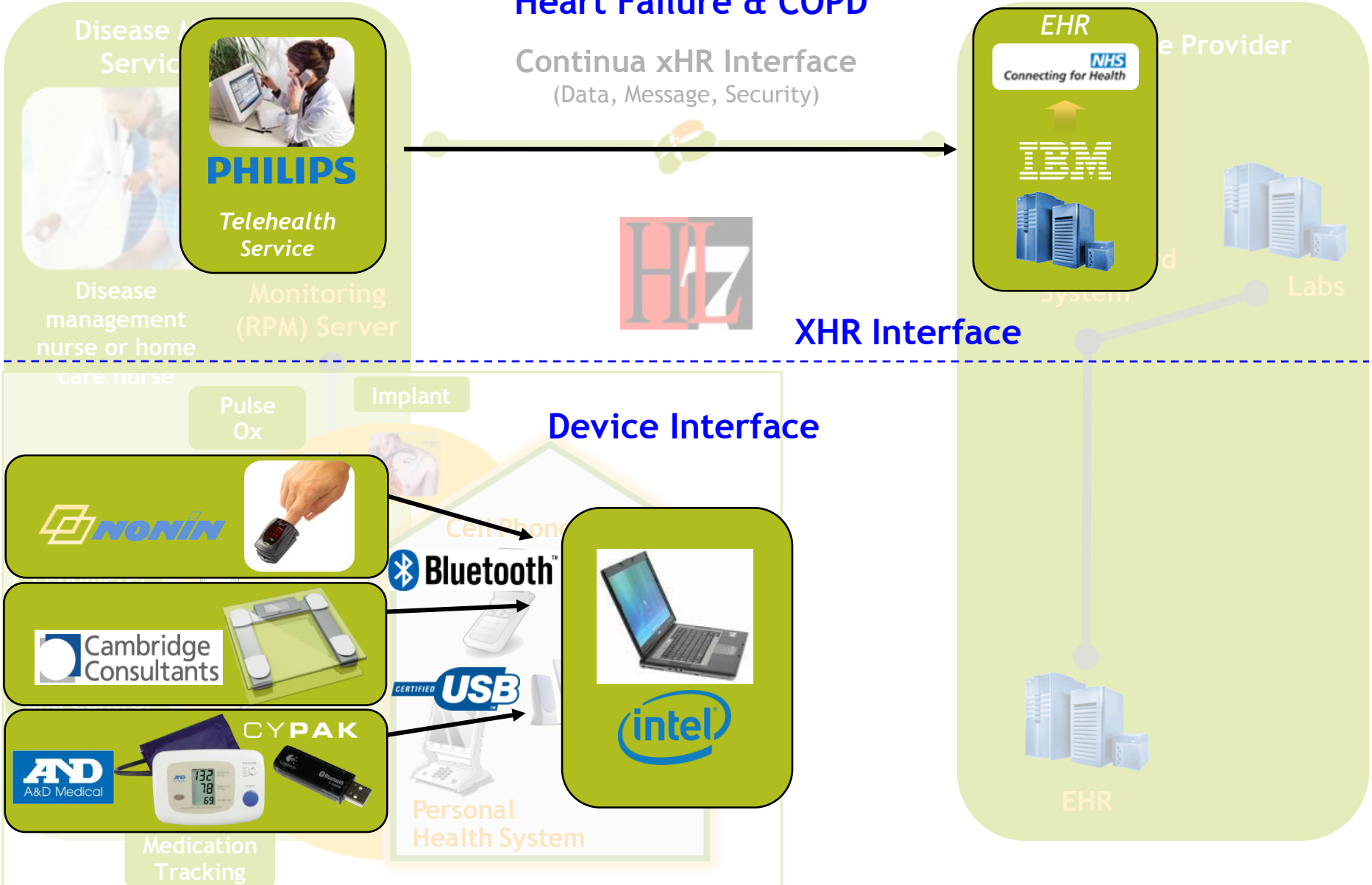
EHR

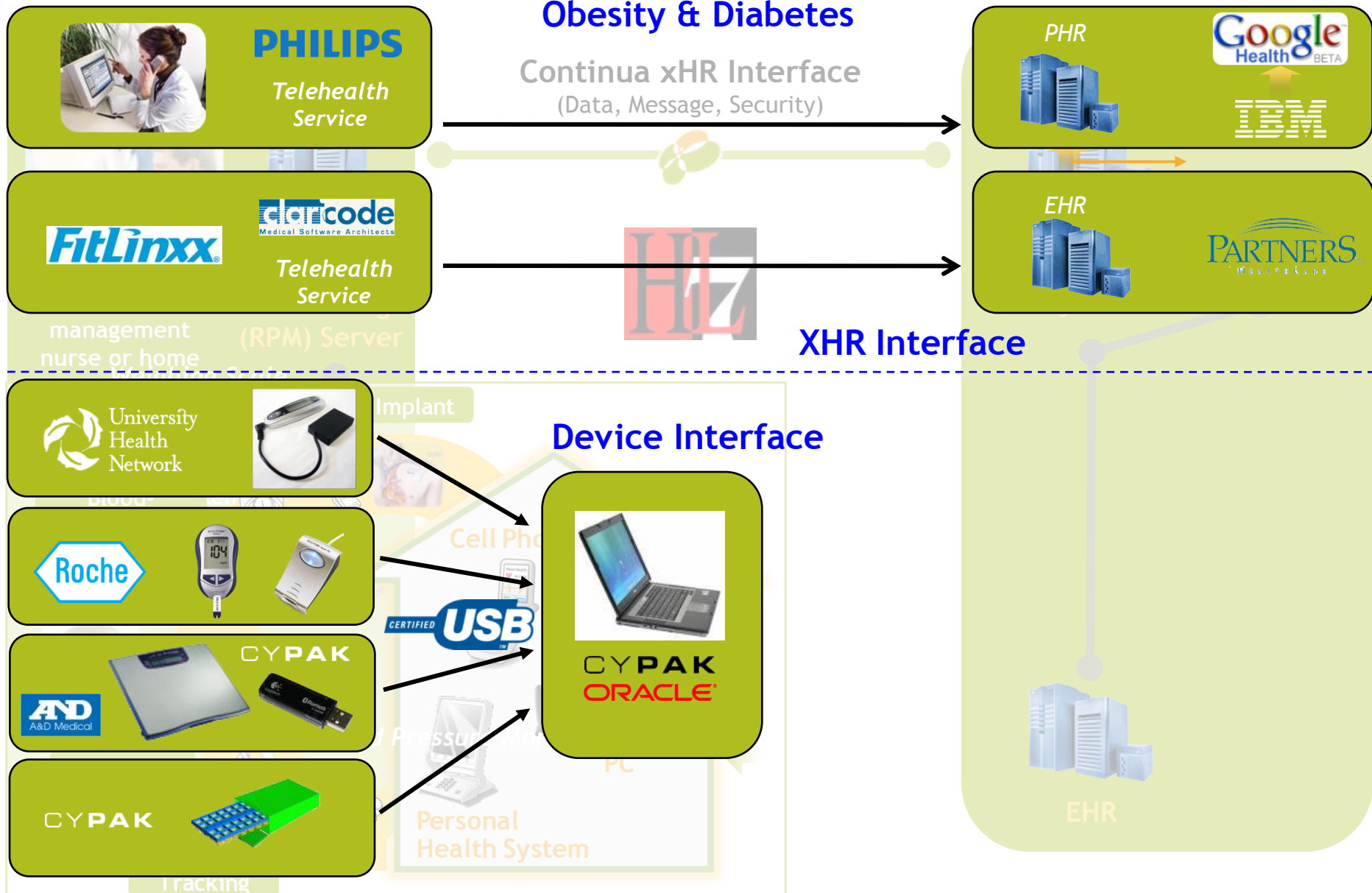




Heart Failure & COPD

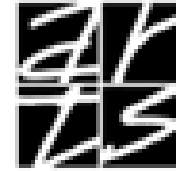
Continua xHR Interface
(Data, Message, Security)







- **When:** Mar. 25, 2009
- **Where:** Hotel Arts, Barcelona, Spain



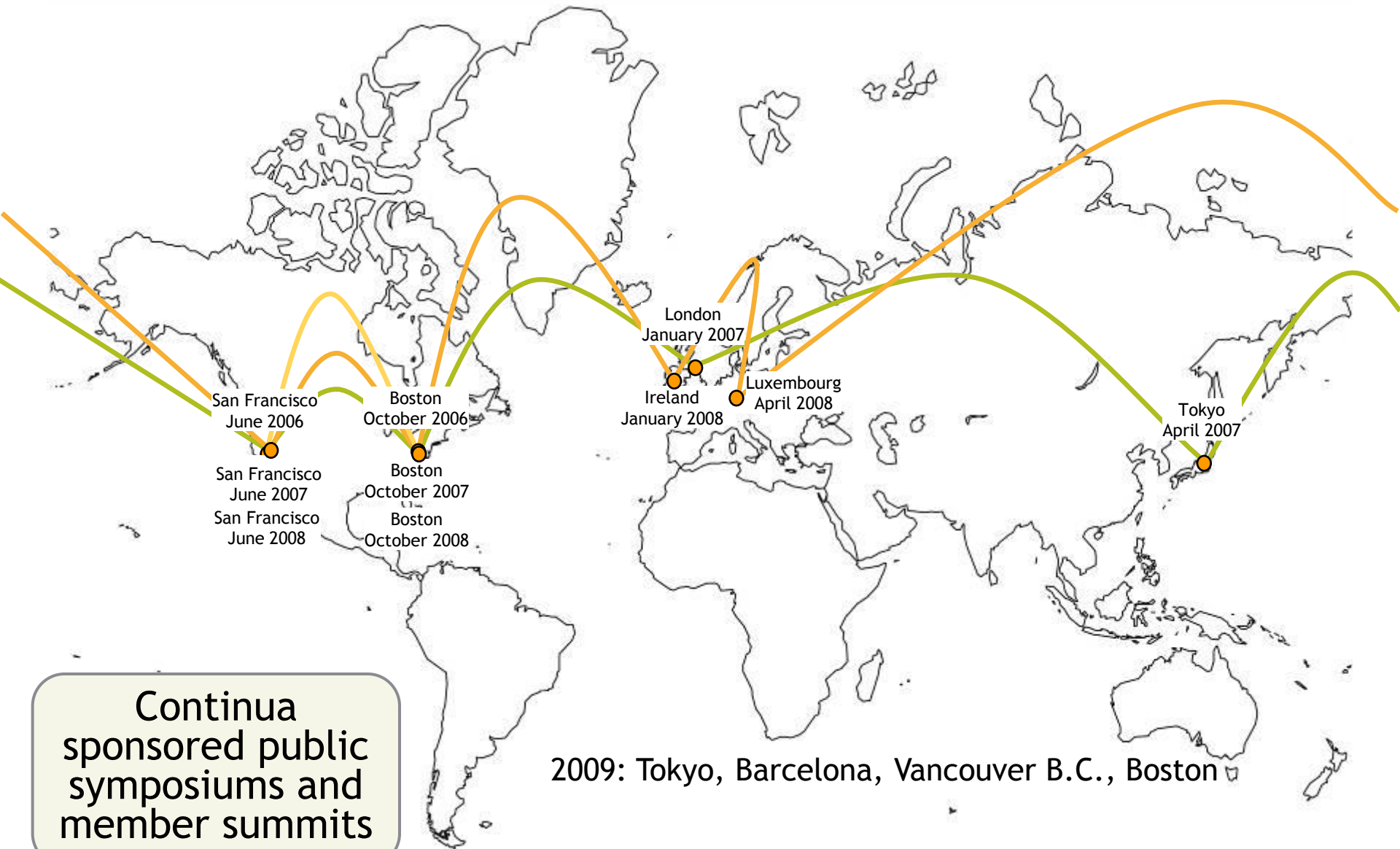
HOTEL ARTS BARCELONA

- **Description**

- Attendees include health professionals, researchers, entrepreneurs, policy makers, health ministries and commission members
- Prepare for the next step towards personalized care organizations
- Goals are to share key deployments of personal telehealth across E.U. and the world, we will look at the new models being created, and discuss the intersection of healthcare, the Internet, telecommunications and the next frontier in biotechnology research

Registration will open soon! Visit:

http://www.continuaalliance.org/news_events/Barcelona_Symposium/
for more information and to register





Thank you!