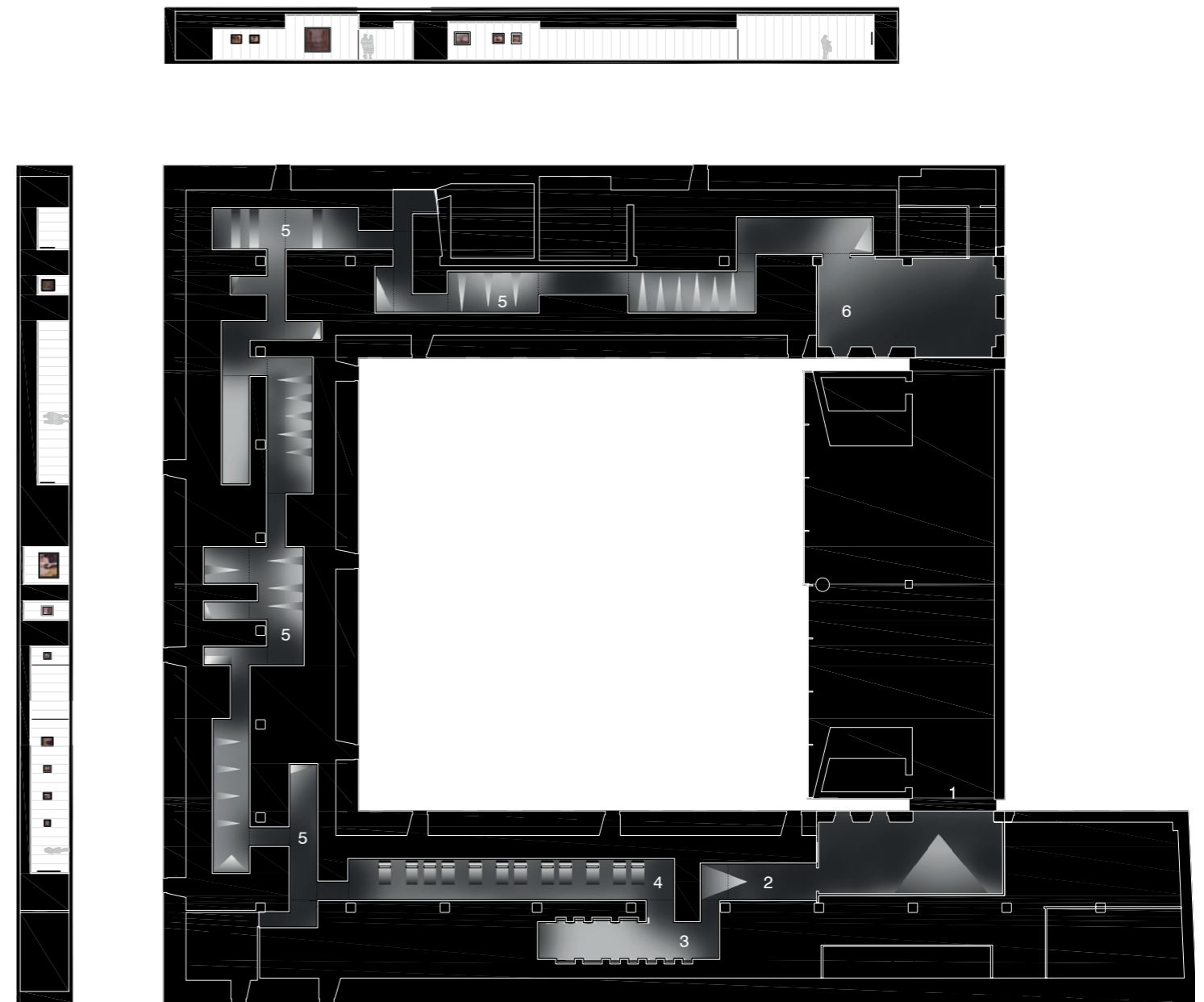




HAMMERSØI ON THE LIGHT OF DREYER
at The C.C.C.B. Barcelona. Spain

RCR Aranda Pigem Vilalta Arquitectes



GENERAL PLAN AND SECTIONS 0 10M

1. Beginning of itinerary 2. Introduction 3. Presentations of two artists room 4. Video projection room 5. Exhibition rooms 6. End of the itinerary



1.Introduction

3.Preseentation of tow artists room

5.Exhibition room

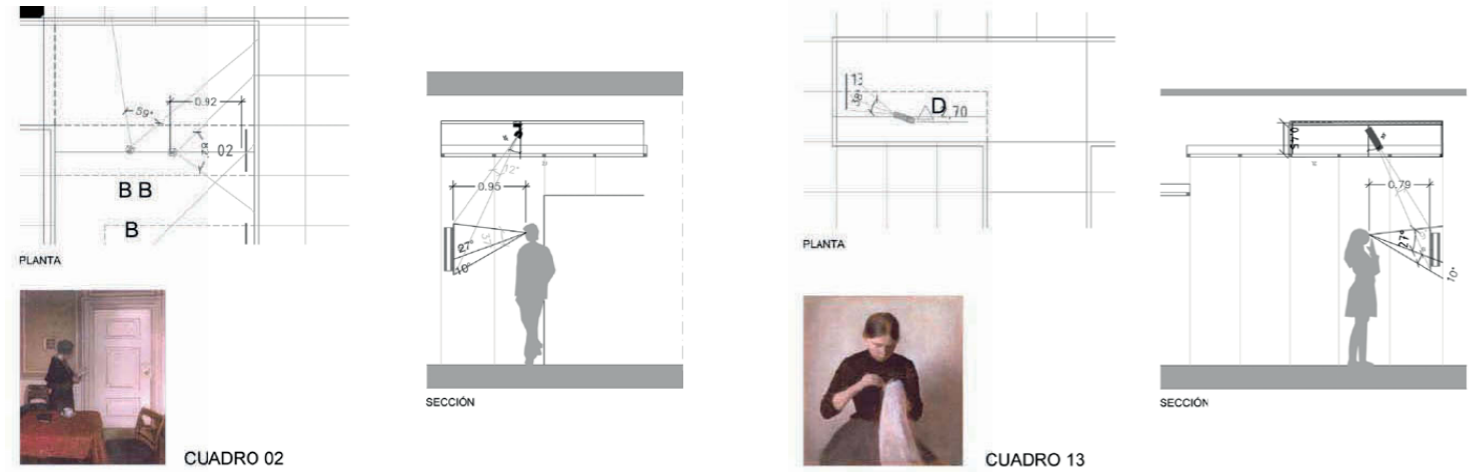
5.Exhibition room

HAMMERSHØI ON THE LIGHT OF DREYER at the CCCB. Barcelona. Spain

Hammershøi is the painter of contained emotions, where the magical light, permeates each of his scenes, conceal and reveal at the same time. And the artist who has been touched by these rays, has been another artist, Dreyer, Nordic too, which has led every scene of his film as a succession of frames of Hammershøi's impressions and has set up an animated soul to his characters where emotions flow with a nakedness that impresses.

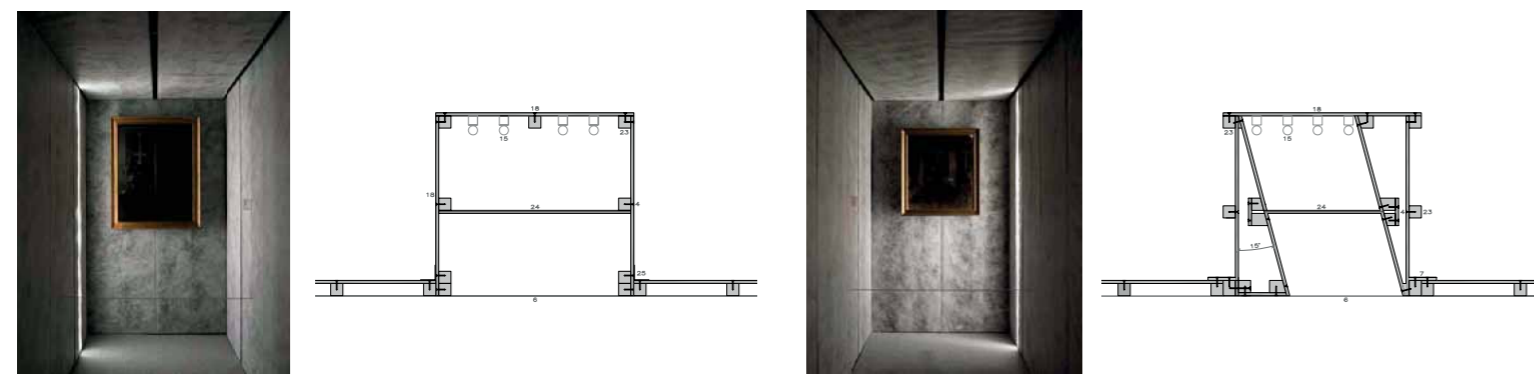
Understand Hammershøi and understand Dreyer, but above all, understand the relationship between the two productions is not to identify paintings with scenes and put them next to each other, but extract the common and allow it to express himself. Light, the more mental concept, which is highlighted and it's the main protagonist. The light exhibition does not illuminate the paintings, but let the paint illuminate the space, so this is tenuous at times (just a few candles), intense (weightless atmosphere in a succession of doors), directed (through a lateral line), suggestive (an open window at the front) and surrounding in its entirety. It also happens to the screens that allow viewing scenes from the films.

As well as light are present substantives such as drama, radicalism, silence, austerity, simplicity, immateriality, mystery, ... clearly opposed to bustle, the BCCC space turn into a series of theatre tables arranged in the interlinings where contemplate (a little alone and the extent of the act and parts), the characters biography, the segments of the films and pictures of the paintings. The materiality of these environments are looking for a certain immateriality to take out its presence and intensify the expressive capacity of the works, and add if possible, another subject relative and dependent to the succession painter and filmmaker who is the exhibitor and wants to extend to the viewer who from these "places" is involved in the sensual perception of the works.



DETAILS OF LIGHTING SYSTEM

0 2M



DETAILS OF LIGHTING SYSTEM

0 0.5M

Promoter: Centre de Cultura Contemporània de Barcelona (C.C.C.B)
 Commissioner: A. Fonsmark, A.Hvidt, C.Tybjerg and J.Balló
 Design and direction of the exhibition space: RCR Aranda Pigem Vilalta ARQUITECTES and Ventura-Llimona Taller d'arquitectura
 Special lighting and Assemblies : ARTEC LIGHTING:
 M.Ginés, I. Domingues, M. Fuentes, J. Piera
 Assembly of exhibition: Nix Profusta, SL
 Date: 26.01.2007-01.05.2007
 Location: Montalegre, 5, 08001, Barcelona, Spain
 Surface : 3.460m2
 Photographs: Eugeni Pons
 Category : Office, Hotel, Shop and Conversion

