



**MAKING MORE OUT OF WOOD**  
innovative · efficient · trendsetting

**BIOENERGY  
FROM WOOD**

30.05. – 03.06.2011

**LIGNA**

HANNOVER · GERMANY  
World Fair for the Forestry and Wood Industries

[ligna.de](http://ligna.de)

# A natural trendsetter

## Welcome to *Bioenergy from Wood*

LIGNA HANNOVER is the world's leading platform for the forestry and timber industry. Leading suppliers from the bioenergy sector will be presenting their products on over 14,000 square metres of display space. LIGNA HANNOVER has the forestry and timber industry completely covered – from resource-efficient technologies for harvesting and processing timber to the myriad uses of wood as a material. Here you'll find the latest in industrial timber technologies, technical developments, new products and trends from all over the world – and all under one roof. With its close links to partners in the forestry and timber sectors, LIGNA HANNOVER drives growth and promotes international networking and knowledge transfer across the industry.

By documenting the complete end-to-end production chain, LIGNA HANNOVER acknowledges the growing importance our society now attaches to sustainability. More and more people are looking to wood as a natural alternative source of energy. So if you want to present your products and innovations for the processing of wood as a material or fuel source to an international buying public, LIGNA HANNOVER is the right place for you! With an audience of approx. 80,000 visitors from 89 countries, we offer you a global platform geared to the needs of working professionals.

*Bioenergy from Wood* at LIGNA HANNOVER features a diverse range of exhibits covering everything from biomass cultivation, energy-saving innovations in engineering and the operation of bioenergy plants to consultancy and planning services. The focus is very much on cutting-edge technologies, because demand for the latest solutions and alternatives, developments and trends has never been greater.

An extensive supporting program of presentations, conferences and conventions adds the finishing touch. These include the BBE Business and Export Forum for Wood Energy, plus a whole series of joint activities organized in collaboration with the Board of Forestry and Forestry Technology, the Lower Saxony Chamber of Agriculture, the NRW State Forestry and Timber Agency and other partners from the forestry and timber sectors.

So if you're in the business of "Making more out of wood", come and join us at *Bioenergy from Wood*, the international industry event that is as innovative, efficient and trendsetting as the material it celebrates!





## Press comments

The decision of the organizers to make "Energy Efficiency" a major theme of the show has been widely applauded by industry observers and commentators:

"We've touched a nerve with the customers by focusing on the issue of resource efficiency. This is going to be a massive trend in the coming years." (Dr. Bernhard Dirr, Managing Director of the German Woodworking Machinery Manufacturers' Association within VDMA)

"'Technology for greater resource efficiency' will be a key issue next year across all display categories at the forestry and timber industry's flagship event."  
(material + technik möbel - May 2008)

"There are many arguments in favour of greater resource efficiency. It is the rational and ethical choice, it makes long-term environmental sense, and it reduces manufacturers' costs." (BM Bau- und Möbelschreiner – 25 April 2008)

"LIGNA has the reputation and the international reach to make it the world's best marketing tool for building customer loyalty and generating new business. And through its successful collaboration with partners in the forestry and timber industry, LIGNA continues to offer the ideal trade show format in 2009 too." (HK Holz- und Kunststoffverarbeitung - January 2009)

"Given the difficult state of the world economy right now, LIGNA is more important than ever." (HOB Die Holzbearbeitung - May 2009)

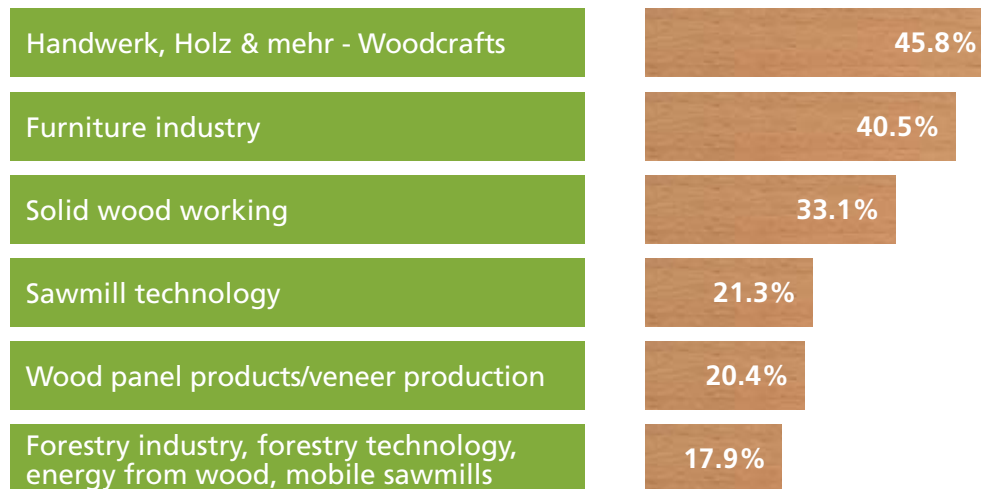
"No serious manufacturer in the world would miss the chance to showcase his new product launches and innovations here." (VDI-Nachrichten - 15 May 2009)

# Natural attraction



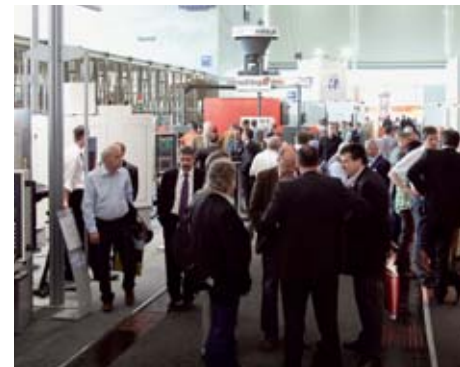
## Which categories interest which visitors?

Meet your international customers from the wood energy industry as well as the wood and furniture industry at LIGNA HANNOVER.



## Visitor target groups "Bioenergy from Wood 2011"

- Wood energy industry  
Local and national energy suppliers, contractors
- Wood industry  
Sawmill and wood panel products industry  
Furniture industry
- Fuel producers
- Forestry and agriculture
- Joiners, cabinetmakers and carpenters
- Logistics professionals
- Politicians, scientists, trade press



## Highlights 2011!

### IN2WOOD

Wood is one of the most important renewable resources. As part of the EU Project IN2WOOD, 13 project partners from six European forest regions will be presenting strategies and concepts at LIGNA HANNOVER for the efficient and sustainable utilization of bioenergy from wood.

### International Year of Forests

The cluster "Forestry and Wood" boasts a ubiquitous presence at LIGNA HANNOVER. The United Nations in New York has designated 2011 as the "International Year of Forests", and this international initiative receives extensive coverage at the show. Representatives of the European Union and national project partners are planning a whole series of activities. LIGNA HANNOVER provides an international matchmaking platform for the forestry and wood industry, where experts can share ideas and solutions that aspire to be "innovative, efficient and sustainable". Don't miss out!



# Naturally diverse

## From timber harvesting to complete wood-fired power plants

### Program

#### Advice

plant and presses

#### Fuels

- Wood fuels
- Wood briquettes
- Wood pellets
- Wood chips

#### Processing

- Firewood bundling machines
- Firewood saws
- Briquette-making

- Pellet-making plant and presses
- Extraction systems for shavings and sawdust (incl. filters)
- Machines for splitting and cleaving wood
- Drying plant and equipment
- Shredders, chippers

#### Storage and transport


- Fuel storage and transport
- Silos

#### Plant, equipment and aids for extracting energy from wood

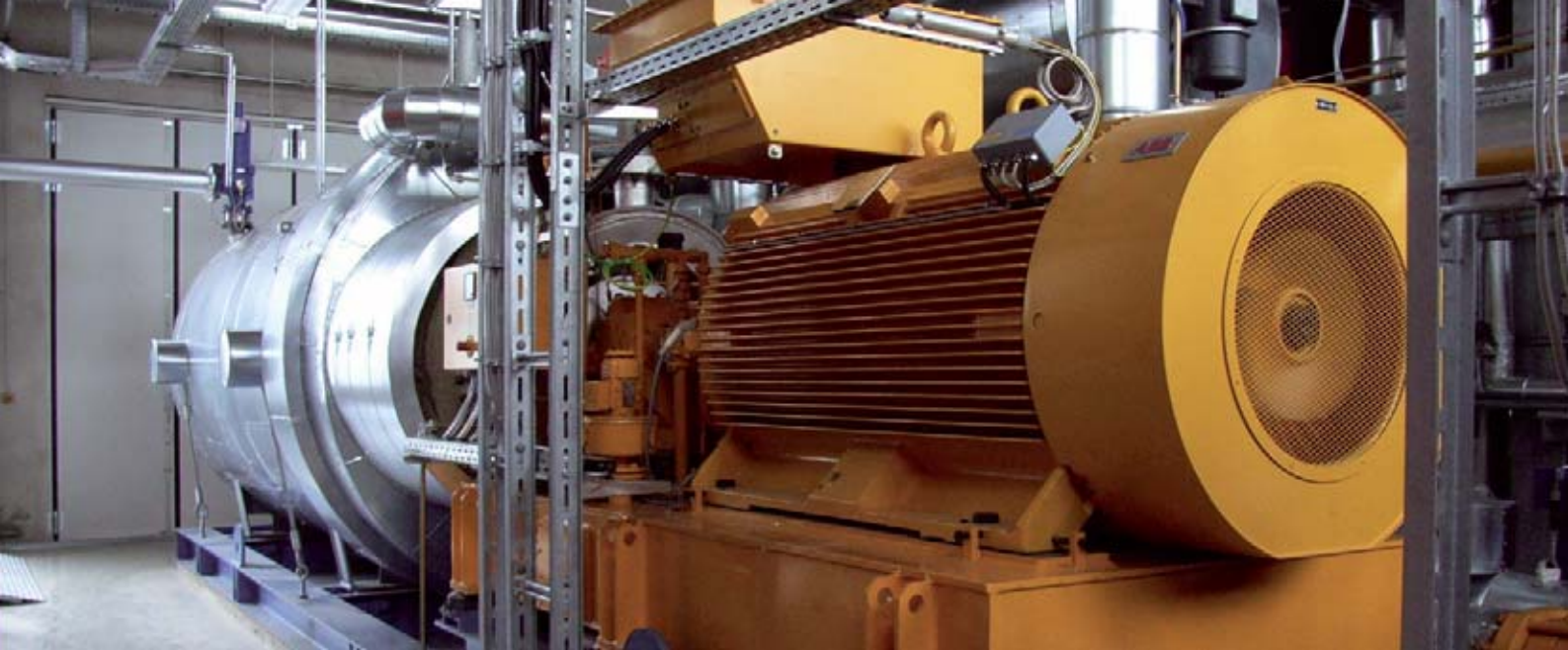
- Plant for generating wood gas

- Furnace systems, fireplaces, wood-burning stoves
- Wood-fired furnace systems for generating hot gases
- Wood-fired furnace systems for generating electricity
- Boiler plant fired by wood or wood-based fuels

### Display categories

	<b>Forestry</b> (Open-air site/FG, Pavilions 32, 33, 34, 35) Machinery, equipment, tools and accessories · Transport, storage systems and logistics Information systems	
	<b>Sawmill technology</b> (Hall 27) Machinery and plant for the production of sawn timber · Measuring and optimization systems for roundwood yards and sawmills	
	<b>Wood materials and veneer production</b> (Hall 27) Machinery, plant and accessories for the production of wood-based materials and veneers	
	<b>Solid wood working</b> (Halls 12, 13) Machinery and plant for solid wood working · Drying systems for sawn timber · Machinery and plant for the production and maintenance of machine tools	
	<b>Furniture industry</b> (Halls 19, 20, 22, 24, 25, 26) Machinery, plant and facilities for industrial furniture production · Automation systems · Industrial surface treatment technology	
	<b>Handwerk, Holz &amp; mehr – Wood crafts · Joinery trades · Carpentry trades · Engineered wood, accessories, services</b> (Halls 11, 12, 14, 15, 16, 17) Machinery, equipment and accessories for joiners and cabinet makers · Machinery, equipment and accessories for timber construction and carpentry · Timber construction · Wood materials · Wood Trading · Interior finishing/remodelling · Furniture production · Technical applications for wood	
	<b>Bioenergy from wood</b> (Hall 13, Open air site/FG, Pavilions 32, 33, 35) Waste wood utilization and energy generation	
	<b>Special presentations</b> (Open-air site/FG, Pavilions 32, 33, 34, 35, Halls 14, 15, 16, 17) Forestry · Research and Training · VDMA-Aktionsforum "vector" · VDMA-Forum "Careers in Wood" · "Wonders In Wood" · BHKH "Form & Function" – BHKH crafts center for carpenters and cabinet makers · International industry associations	





## Decision time

Choose a presentation option that meets your particular needs, and benefit from our early booking discounts.

### 1. Bare stand space, no stand included, one year contract for 2011

#### Hall

Early booking discount for registrations received by 31 May 2010.

#### Open-air site + pavilions

Early booking discount for registrations received by 31 May 2010, prices staggered according to number of square metres.

### 2. Bare stand space, no stand included, contract for 2011/2013

#### Hall

Early booking discount for registrations received by 31 May 2010.

#### Open-air site + pavilions

Early booking discount for registrations received by 31 May 2010, prices staggered according to number of square metres.

### 3. Fair-Package – stand space with full stand assembly and services

## Services for exhibitors at LIGNA HANNOVER

With our comprehensive service packages you have access to targeted marketing tools that will generate a lot of attention at very little cost. Use them to tell buyers about your innovative and pioneering initiatives and services for industry – at [www.service.messe.de](http://www.service.messe.de) you'll find everything you need to smooth your path and make your presentation more effective.

## Organizers



### Deutsche Messe

Hannover · Germany

Deutsche Messe  
Messegelände  
30521 Hannover  
Germany  
Tel. +49 511 89-0  
Fax +49 511 89-32626  
ligna@messe.de  
ligna.de



Holzbearbeitungsmaschinen  
Lyoner Strasse 18  
60528 Frankfurt a.M.  
Tel. +49 69 6603-1340  
Fax +49 69 6603-1621  
vdma.org/holz

## Your contacts in Hannover

**Figen Günay**  
Project Manager  
Tel. +49 511 89-32126  
Fax +49 511 89-31263  
figen.guenay@messe.de

**Stefanie Franck**  
Project Assistant  
Tel. +49 511 89-31113  
Fax +49 511 89-31263  
stefanie.franck@messe.de

## Your contact in Frankfurt

**Dominik Wolfschütz**  
Tel. +49 69 6603-1819  
Fax +49 69 6603-2819  
dominik.wolfschuetz@vdma.org

Deutsche Messe maintains an extensive network of local representatives.  
The relevant addresses are listed under: messe.de