

Global Fairs. Global Business.



Deutsche Messe  
Hannover · Germany

# Service Catalogue INTERSCHUTZ 2010





It's about  
your business

# Contents

## Listings in the tradeshow media

Tradeshow media	5
Listings for other tradeshows	6

## Advertising your trade fair appearance

Online advertising	9
Advertising in the exhibitor index or trade fair catalogue	10
Advertising in the trade fair newspaper	10
Advertising materials	11
Complimentary admission tickets	14
Exhibitor passes	14

## Press services

Use our Press Service Channels to gain top media attention at the INTERSCHUTZ 2010!	16
---	----

## Stand construction services

General stand construction services	20
Typical stand configurations	20

## Fittings for your tradeshow stand

Floor coverings	35
Rental furniture and kitchen equipment	36
Transport and exhibitor insurance	45

## Online Business Service

OBS access data and authorization	47
Ordering using OBS	48
Orders by fax	49

All prices listed in the Service Catalogue INTERSCHUTZ 2010 are net prices, to which German VAT will be added. These prices reflect the status at the time of printing and are subject to potential alteration.

Photos page 16-17: Leipziger Messe



Listings in the  
tradeshow media

# Tradeshow media

## List your products to maximize your leads!

Relevant business clients rely increasingly on the Internet to find new and innovative products and solutions. Often they need to compare products and services in related fields before making a decision to invest. “Research online, purchase offline” has become a fundamental principle of today’s procurement management. At our central event-based websites we embrace this phenomenon, offering users and tradeshow visitors an opportunity to

look up our exhibitors as well as their products and services with the help of a targeted online search function – 24/7, worldwide. By listing your company and its product portfolio comprehensively in the relevant tradeshow media, you can open up effective avenues for perpetual new business leads, turning your tradeshow appearance into a year-round affair.

### Online: Our event websites

Our vertical-market websites represent the main information platform for our exhibitors, tradeshow visitors and potential customers from across the globe, allowing them to search for exhibitors as well as the relevant products and services in English or German – around the clock, 365 days a year. Our websites handle millions of search queries annually.

Your information will be published online a full six weeks before the start of the event, making it accessible during the critical run-up to the show. A comprehensive listing of your products and services

represents an ideal opportunity for you to generate valuable new leads before, during and even after the event, since your information remains accessible online until the beginning of the next event cycle. All the more reason to make extensive use of our popular online classified directories and put your best foot forward in the marketplace.

Depending on the event, your listings are also available as downloads for mobile devices.

### Print: Exhibitor indexes and tradeshow catalogues

Tradeshow catalogues and exhibitor indexes represent the key source of printed information long after the trade fair ends. As practical and reliable research tools, they are consulted by a large number of

decision-makers both during the event and throughout the year. The listings appear in well-organized directories, making them a fast and convenient tool for finding the right partner.

### LIVE: Visitor information system at the exhibition center (EBi)

With up to 50 information terminals, our Electronic Visitor Information System (EBi) is available at different locations around the exhibition grounds, including at the entrance gates. Visitors can get instant information on exhibitors and their products and services, along with answers to questions involving general tradeshow events and services. Trained staff

at each ‘EBi’ terminal are available to assist exhibitors and visitors. This free information service handles almost three million queries a year – an enormous volume, underscoring how vital it is to have your company and its detailed product range represented in this highly efficient system.

# Listings for other tradeshow

## Contact:

Oreste Mallus  
Tel. +49 511 89-32303  
oreste.mallus@messe.de

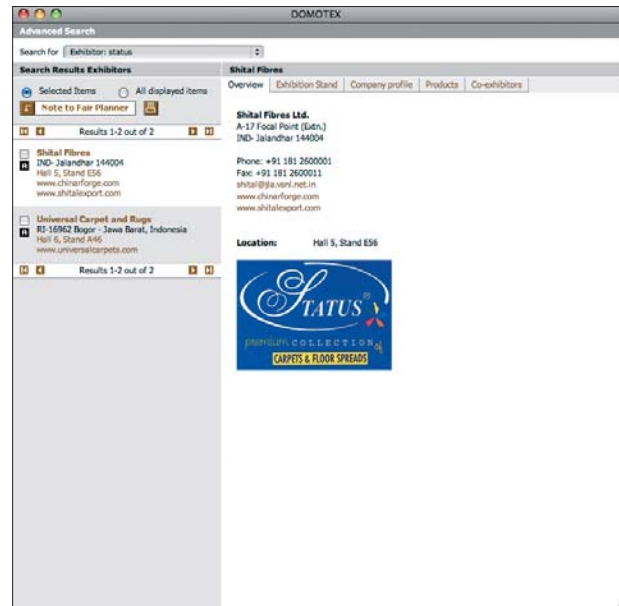
For a list of the charges for catalogue and electronic media listings, please consult our OBS system (a description of OBS can be found under "Online Business Service," pages 46–49).

## Company listings

### • Company details

When you participate as an exhibitor, your company details (company name, address, phone, fax and e-mail) plus your contact details during the show (hall and stand number) are published automatically in all our media. Your stand phone and/or fax number will also be published, assuming you order these services by the required deadline.

For selected events you can supplement your company information with additional text or colored product photos. This supplementary information then appears in the alphabetical exhibitor index in the catalogue as well as on the Internet. For more information, please see the relevant conditions for participation or the OBS system.



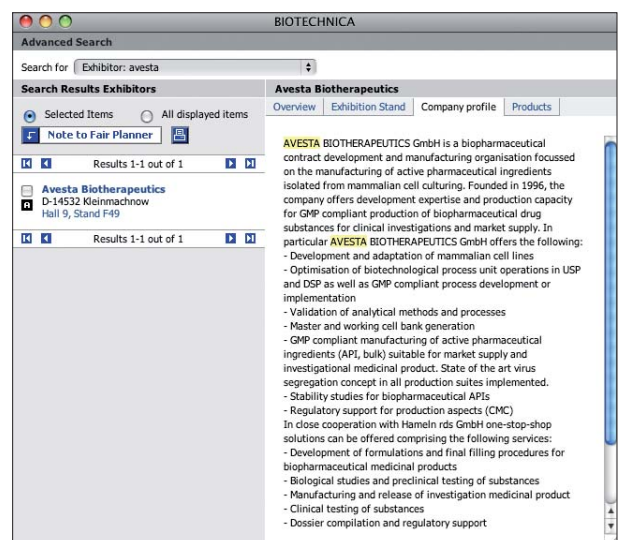
Company details with company logo

### • Company logo

Along with your company details, you can also insert a company logo on the tradeshow website or in the printed catalogue – an ideal opportunity to set yourself apart from the competition.

### • Company profile

Business partners and potential customers can find out more about your core businesses, target groups, customer recommendations and corporate structure if you publish a company profile. We recommend submitting your company profile in both English and German for the widest possible coverage.



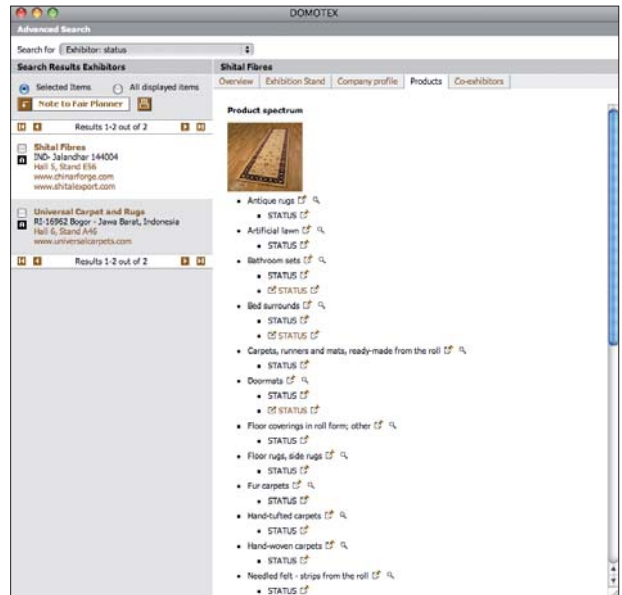
Company profile

# Product listings

## • Product category index

Which company offers what? Your listings in the official product category index ensure your company will appear in the “hit lists” of users searching for exactly your range of products and services. The product category index directs visitors right to the stands of the appropriate exhibitors when they perform a product-based search either on the Internet or within the electronic visitor information system. Take advantage of this service to publicize your entire range of products and solutions. Don't risk losing prospective customers to the competition simply because their listings were more comprehensive than yours.

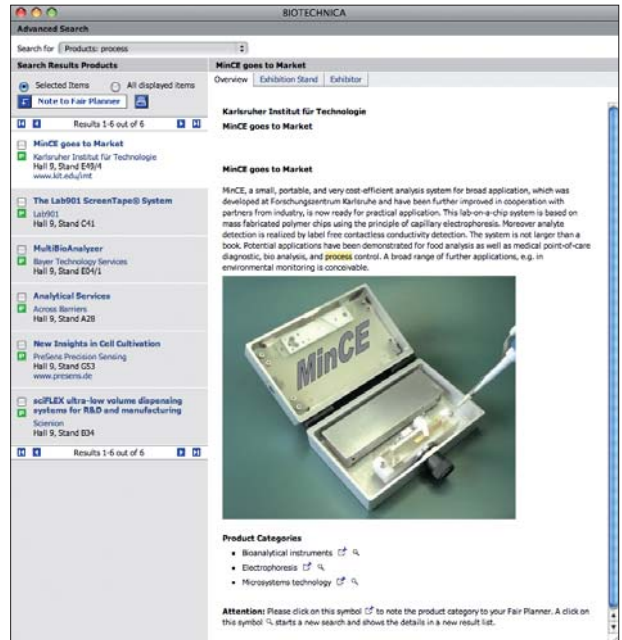
Nobody can find you unless your goods and services are listed in the official product category index – so don't forget to order this service.



## • Product profiles

This is where your products and services come to life for interested Internet users. The publication of your product profiles, consisting of detailed text profiles in English and/or German plus descriptive product photos serve as the basis for qualified leads. Each product can be featured in a separate profile with its own title, which serves as the search term and is also contained in a separate overview.

**TIP:** You can also insert ads and banners in the catalogue and on the Internet. To find out more about these and numerous other marketing options, check out “Advertising your trade fair appearance” on pages 8 – 14.



Eingang Entrance

Advertising your  
trade fair  
appearance

**Visit us!**

Hall 2 stand B17

# Online advertising

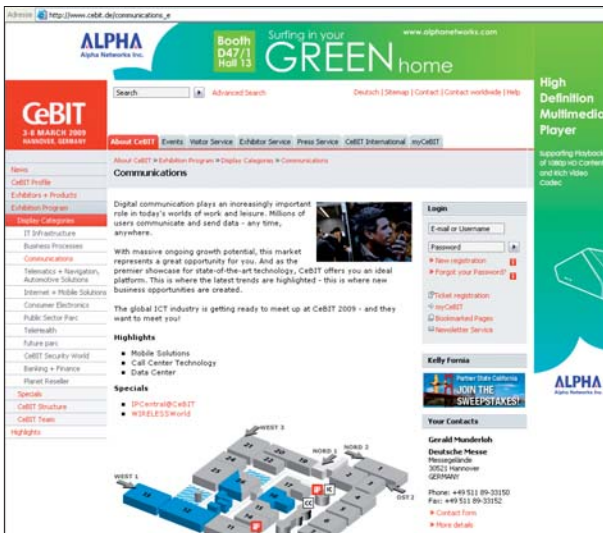
## Contact:

Katja Anssar  
Tel. +49 511 89-34314  
advertising@messe.de

Online advertising has become a fixture of every sophisticated marketing campaign. Not only does it draw attention to your company, it also brings visitors to your homepage or even directly to your product pages.

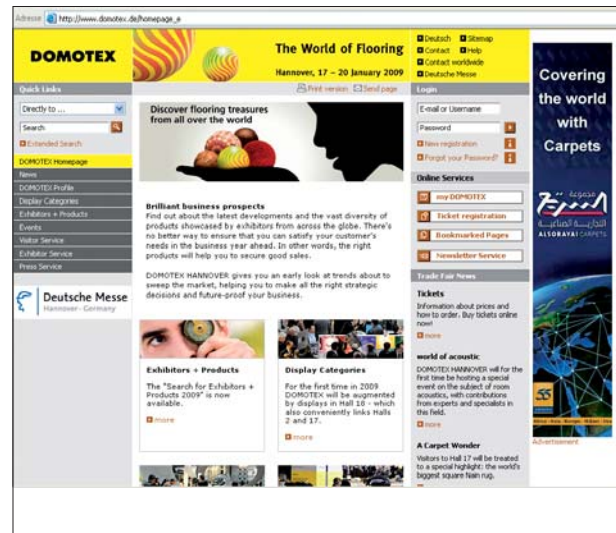
Your advertising on our tradeshow websites gives you access to an audience made up almost exclusively of professionals – at a price under 400 euros. From large-format, exclusive wallpaper to one-third banners – we have the right answer for any budget.

Several million ad impressions on our event websites speaks for itself. Harness this powerful platform to your advertising needs! We'll be happy to provide you with further information and advice on the specific options for each tradeshow.



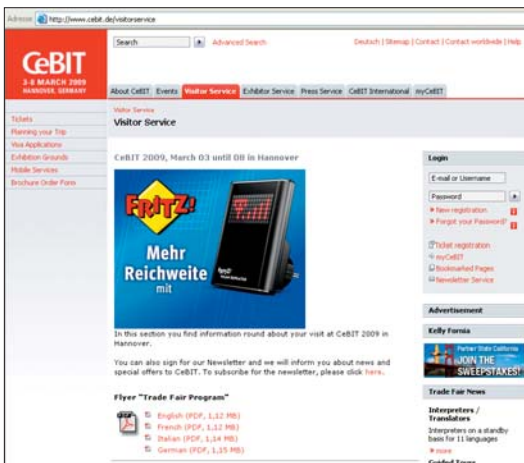
## Wallpaper

Super banner, 728 pixels wide x 90 pixels tall plus skyscraper, 120 pixels wide x 600 pixels tall



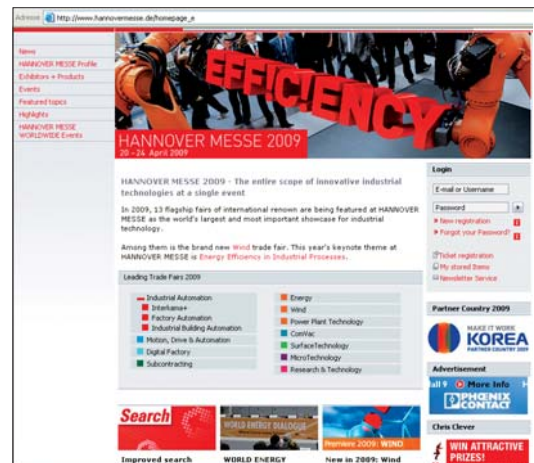
## Skyscraper

120 or 160 pixels wide x 600 pixels tall



## Rectangle / Content ad

300 pixels wide x 250 pixels tall



## One-third banner

156 pixels wide x 60 pixels tall

# Advertising in the exhibitor index or trade fair catalogue

## Contact:

Oreste Mallus  
Tel. +49 511 89-32345  
oreste.mallus@messe.de

The official tradeshow catalogue or exhibitor index is a highly popular source of information for tradeshow visitors and industry decision-makers all year long. We will be happy to provide you with more information about your advertising options here, including full or half-page ads, "bookmark ads", placement options, prices and conditions.

Please be aware that for each trade fair, there is either a tradeshow catalogue or an exhibitor index.



# Advertising in the trade fair newspaper

## Contact:

Andrea Staude  
Tel. +49 511 89-31015  
andrea.staude@messe.de

The official trade fair newspapers produced by Deutsche Messe appear regularly in large circulation and are distributed free-of-charge to keep international visitors and exhibitors abreast of all the latest developments at the show – including special events, product innovations and VIP visits to the show. The papers also highlight visitor impressions, interesting product exhibits, special-interest articles on companies and services, plus newsworthy items involving tradeshow happenings and breaking developments in your sector. Make use of this newspaper format as an advertising vehicle to reach your target groups at the trade fair. We will be happy to provide you with more information on advertising formats and insertion options – just give us a call.

**TIP:** When placing newspaper ads, we recommend you go exclusively through the official newspapers for your event – no other publications are cleared for mass distribution on the exhibition grounds or at the entrance gates.



# Advertising materials

## Contact:

Heidi Bauer  
Tel. +49 511 89-31237  
heidi.bauer@messe.de

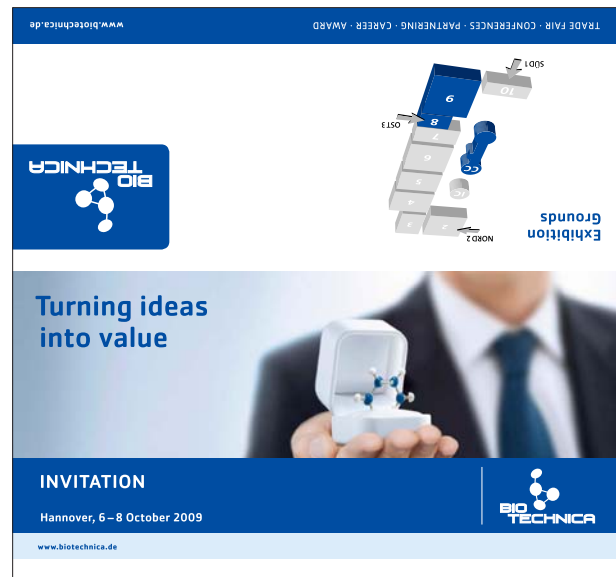
A wide variety of advertising materials are available for you to conduct broad-based promotional campaigns and inform your business partners, customers

## Invitation stationery

An individually printed invitation letter signals how much you value your business partners and customers. Add your company logo and address to our template and use the inside of this invitation stationery to include a personal message and/or inform recipients of your location at the trade fair. For your convenience, this information can either be commercially printed, photocopied, laser-printed or handwritten.

and potential customers about your appearance at the show. Almost all advertising materials supplied by Deutsche Messe are available in unlimited quantities and are free of charge, either via the OBS system or as downloads.

For detailed information on our trade fair advertising materials, check out [www.messe.de/advertisingmaterial](http://www.messe.de/advertisingmaterial)



Space for inserting a personal invitation

## Visitor brochure

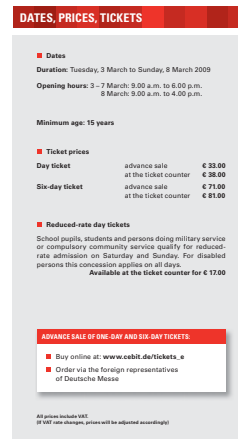
This brochure contains a description of the individual display sectors, special events and supporting programs as well as key information on the show itself, for example accommodations and getting there, admission prices etc.



## Tradeshaw flyer

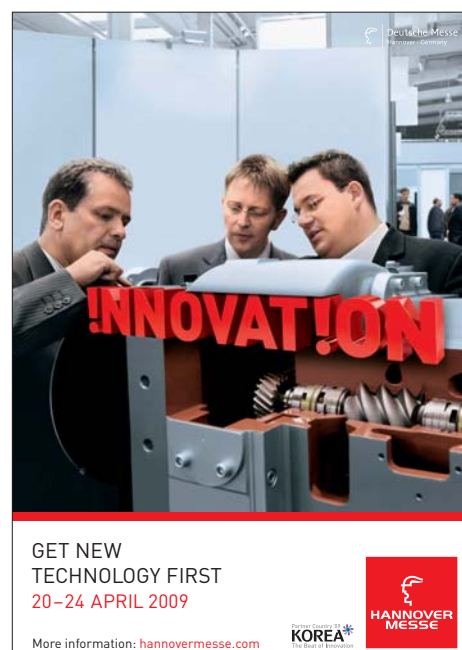
You can use this flyer to give your customers a short overview of the tradeshow before it begins. The flyer consists primarily of an exhibition map,

supplemented by the major display categories and information on show dates and opening times, admission prices etc.



## Posters

Draw attention to your upcoming trade fair appearance at your own premises, be it in the lobby, in conference rooms or on the notice board. A1-size posters from Deutsche Messe make a lasting impression.



## Mailing stickers

Small size, big impact: Use our mailing stickers to brighten up your business correspondence. As an alternative to the standard text („We'll be there: Hall o, Stand oo") you can have your own individual message and company logo printed on the stickers (reproduction proofs of logo required).

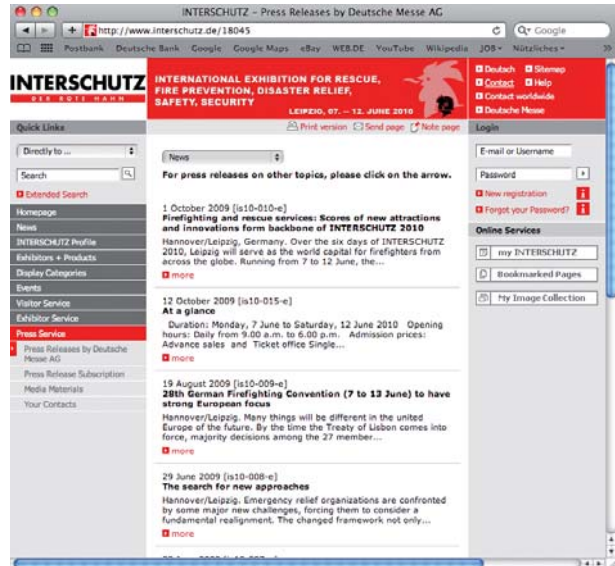
Price for mailing stickers with standard text: € 27.80 per 1,000.

Price for mailing stickers with individual company imprint: min. € 123.60 for the first 1,000, then € 27.80 for each additional 1,000.



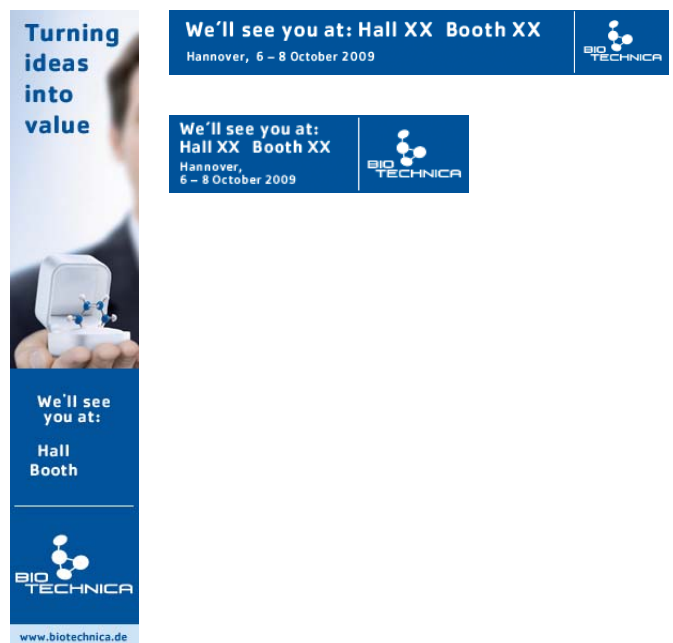
## Downloadable logos and maps

Let the high recognition factor of our trade fairs work for you in your own marketing activities: Include our trade fair logo and map of the showgrounds in your own promotional materials (for example, in ads, PR reports, charts or brochures).



## Online banners

Advertise your tradeshow appearance with an automatically generated, static online banner on your own website. Around six weeks before opening day of the show, Deutsche Messe will activate its "banner generator," which automatically creates an upload-able banner containing your hall and stand location when you log onto our website. At the same time, you will receive a link through which users can call up your company and product details for the respective tradeshow.



# Complimentary admission tickets

## Contact:

Complimentary ticket hotline  
Tel. +49 511 89-39000  
complimentary-tickets@messe.de

Take advantage of this unique tool for winning and retaining customers: A personal invitation which includes a complimentary admission ticket is the most effective method of promoting awareness of your tradeshow stand and inspiring current and potential customers to attend.

This popular marketing tool is available in two options: printed tickets, ideal for enclosure with a mailed letter or for presenting to your guest in a face-to-face encounter, or eTickets – perfect for inexpensive e-mailings and last-minute invitation campaigns. Your own individual imprint appears on both types of ticket.

We also offer special complimentary season tickets as well as attractive, flat-rate ticket packages for the show.

We'll be happy to provide you with more information and advice on your invitation campaigns – feel free to contact us!



eTicket

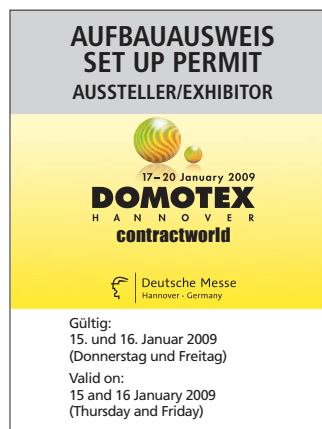
# Exhibitor passes

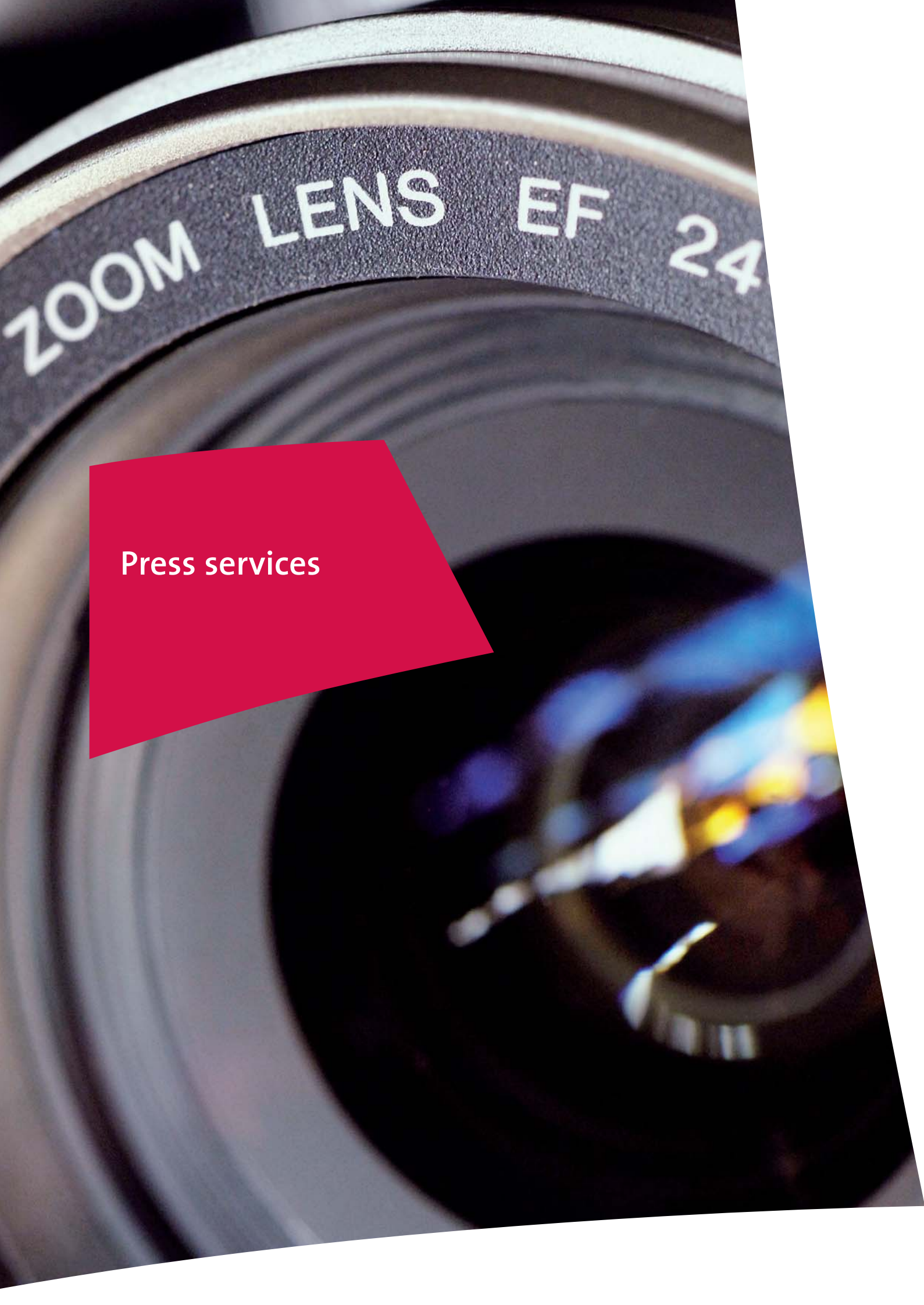
## Contact:

Maike Kunze  
Tel. +49 511 89-33226  
maike.kunze@messe.de

Each exhibitor automatically receives a free contingent of exhibitor passes from Deutsche Messe, granting his stand personnel free access to the exhibition stand during the running event. The number of passes depends on the show and the size of the stand. If additional passes are required, we recommend ordering these in advance using OBS. You can also pick up exhibitor passes onsite at the Exhibitor Service Center (German abbreviation: ASC). You can return any unused exhibitor passes for crediting to your account within two weeks of closing day of the show.

During the stand assembly and dismantling periods, no exhibitor passes are needed to gain access to the exhibition grounds.





Press services

# Use our Press Service Channels to gain top media attention at the INTERSCHUTZ 2010!

Make sure that your company receives the media coverage it deserves. This is no problem, thanks to the extensive press services available at INTERSCHUTZ 2010. For example, you can deposit product information in our distribution boxes – either online or in the Press Center. You can also benefit from numerous other support services, including free listings in our databases. Journalists from all over the world use these facilities to tune into the latest industry trends. In addition, we will gladly assist with the preparation of press conferences. In this way you can make sure that your innovations hit the headlines.

## Listing in the online press guide

### Contact:

Claudia Eckardt  
Tel. +49 511 89-31604  
claudia.eckardt@messe.de

With the online press guide at their fingertips, journalists from all over the world will be able to communicate directly with the person(s) responsible for press liaison within your company. Stored on the INTERSCHUTZ press server, your contact details can be viewed at any time by registered journalists.

**Orders:** OBS service area: press services

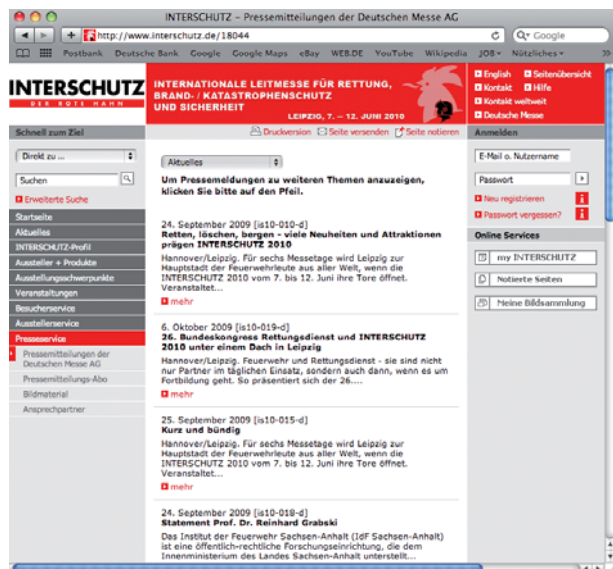
**Price:** free of charge

## Internet press boxes

### Contact:

Oreste Mallus  
Tel. +49 511 89-32303  
globis@messe.de

Available via [www.INTERSCHUTZ.de](http://www.INTERSCHUTZ.de), these online press distribution boxes are activated three months before the start of INTERSCHUTZ 2010 and are continuously updated. The information can be downloaded by users at any time. In addition, it is distributed by e-mail to registered journalists.



**Orders:** OBS service area: press services

Texts: max. 10,000 characters;

DOC or RTF format only

Images: max. 1.2 MB (2,500 pixels),

JPG format only

**Prices:** texts EUR 100 (per language);

images EUR 70 (per image)

## Press info trays at the Press Center

### Contact:

Susanne Sattler  
Tel. +49 511 89-31605  
susanne.sattler@messe.de

Journalists from all over the world will visit the Press Center during INTERSCHUTZ 2010 at the heart of the Exhibition Grounds. Take this unique opportunity to deposit information on your company in rented distribution boxes. We recommend that you prepare this information in English and German.

**Orders:** OBS service area: press services

**Price:** EUR 57 per press box



## Press conferences

### Contact:

Susanne Sattler  
Tel. +49 511 89-31605  
susanne.sattler@messe.de

We can help you plan, coordinate and stage your press conferences. We will also ensure that the relevant press conference schedules are widely circulated on the Internet and at the Press Center.

**Price:** free of charge



## Internet broadcasts and image trailers

### Contact:

Andrea Staude  
Tel. +49 511 89-31015  
andrea.staude@messe.de

The Internet is the medium of the future. It is the ideal place to publicize your company and its

product innovations – either live or on demand. You also have the option of putting your impressions and highlights to an audiovisual image trailer.

**Orders:** OBS service area: press services

**Price:** will be quoted upon request

## Products and innovations

### Contact:

Susanne Sattler  
Tel. +49 511 89-31605  
susanne.sattler@messe.de

Your product descriptions will be edited by our trained editorial staff and reviewed in terms of their innovative content. Following this, your information

on your products and innovations will be stored on our online press server. This information can be accessed by journalists eight weeks in advance of INTERSCHUTZ 2010 – during and after the show as well.

**Orders:** OBS service area: press services

**Price:** free of charge

## “HOT TOPICS”

### Contact:

Andrea Staude  
Tel. +49 511 89-31015  
andrea.staude@messe.de

Innovative products, new trends and advanced applications are the lifeblood of daily newspapers, business journals, radio and TV stations. These media are also interested in human interest stories – e.g.

visits by well-known business leaders, artists and show stars. Inform us in good time about any interesting news items. We'll then edit this material and publish it in our Hot Topics press release, which is targeted primarily at the news media. Printed versions will also be available at the Press Center.

**Orders:** OBS service area: press services

**Price:** free of charge

## Key editorial addresses

### Contact:

Susanne Sattler  
Tel. +49 511 89-31605  
susanne.sattler@messe.de

A detailed list containing the names and addresses of German and international trade media will help

you to distribute information and invitations to your chosen target groups.

**Orders:** OBS service area: press services

**Price:** free of charge

A close-up photograph of a metal stand joint. The joint is a spherical or cylindrical hub with six threaded ports arranged in a circular pattern. The metal is highly reflective, showing bright highlights and deep shadows. The background is a plain, light-colored surface.

Stand construction  
services

# General stand construction services

## Contact:

Frank Zwingmann  
Tel. +49 511 89-32227  
frank.zwingmann@messe.de

Save time and money designing your stand – by relying on our years of experience and know-how at Deutsche Messe. From simple, basic stands to high-end, deluxe solutions, we streamline the exhibiting experience for you by providing turnkey, modular

stands, which you can customize by selecting your own optional equipment and fittings.



**TIP:** Our turnkey “fair package” solutions offer you even more services, including floor space, stand assembly and much more. For further information, visit: [www.INTERSCHUTZ.de/fairpackage\\_e](http://www.INTERSCHUTZ.de/fairpackage_e)

## Typical stand configurations:

### Typical stand configurations



#### Type A stand

Basic stand assembly for simple, straightforward presentations at a budget price

from 75 € per m<sup>2</sup>



#### Type B stand

Modular stand system – the combination of modular ceiling sections and standard add-on elements offers plenty of scope for customized stand design

from 92 € per m<sup>2</sup>



#### Type D stand

Open-sided stand design, which offers an ideal presentation platform with its back-lit advertising tower topped by a rotating cube

from 115 € per m<sup>2</sup>



#### Line-type stand

High-specification, innovative modular stand system, which features glass and textile design elements even in the basic fittings package

from 135 € per m<sup>2</sup>



#### Truss-type stand

Truss-based system – can be used to construct a modular stand (with additional fittings) or as a customized extension to any type of stand construction

from 35 € per m<sup>2</sup>  
(see price scale on page 33)

# Type A modular stand

Modular stand, recommended for stand sizes of up to 25 m<sup>2</sup>. Rental price for basic fittings, including assembly and dismantling: € 75 per m<sup>2</sup> and event.

## Basic fittings

### Carpeting

Disposable off-the-roll cord carpeting, available in 6 colors



### Perimeter partition walls

to adjacent stands and/or hall walls, constructed of Octanorm elements, silver, with light grey infill panels, 250 cm high

### Ceiling

consisting of OC frame sections along the open sides of the stand, including all necessary beams and pillar supports

### Fascia panel

light grey, 200 x 30 cm, face-mounted along each open side of the stand, including black lettering in typeface Futura Bold (up to a maximum of 30 letters)

### 1 electrical distribution box

for connections of up to 3 kW with 2 available sockets, 230 V

### 4 spotlights

50 W each

### Cabin

100 x 100 cm, with lockable door

### 1 table

diameter 70 cm or 70 x 70 cm square, with white worktop and chrome-plated underframe

### 3 chairs

with chrome-plated frame and black upholstery

### 1 coat rack

fitted inside the cabin

### 1 wastepaper basket



Typical stand configuration with additional fittings



Basic fittings

You'll find additional fittings for type A stands on pages 23 – 26.

# Type B modular stand

Modular stand, recommended for stand sizes of up to 100 m<sup>2</sup>. Rental price for basic fittings, including assembly and dismantling: € 92 per m<sup>2</sup> and event.

## Basic fittings

### Carpeting

Disposable off-the-roll cord carpeting, available in 6 colors



### Perimeter partition walls

to adjacent stands and/or hall walls, constructed of Octanorm elements, silver, with light grey infill panels, 250 cm high

### Ceiling

Octanorm modular sections (approx. 100 x 100 cm), silver, mounted on top of the OC system around the perimeter of the stand. Height of upper edge of ceiling above floor level: 300 cm.

### Fascia panel

trapeziform, one per open stand side, 200 x 50 cm, light grey, including black lettering in typeface Futura Bold (up to a maximum of 30 letters)

### 1 electrical distribution box

for connections of up to 3 kW with 2 available sockets, 230 V

### 1 spotlight

50 W each, one per 3 m<sup>2</sup> of floor space

### 1 wastepaper basket

## Basic fittings, depending on stand size

Stand area (m <sup>2</sup> )	20/49	50/79	80/100
Size of cabin/No. of wall elements required: (all cabins include 1 door element, lockable)	4 m <sup>2</sup> / 3	8 m <sup>2</sup> / 5	10 m <sup>2</sup> / 6
Table(s), dia. 70 cm or 70 x 70 cm	1	2	3
Chairs	4	8	12
Coat rack(s)	1	2	2



Typical stand configuration with additional fittings



Basic fittings

You'll find additional fittings for type B stands on pages 23 – 26.

## Additional fittings for type A and B stands

### Wall and cabin fittings

1.1	Wall element (as for basic fittings package) 1 m element	€ 30.80
1.2	1/2 m element	€ 30.80
1.3	1/4 m element	€ 30.80
1.4	Infill panel, colored one side (RAL colors, hdc material), per linear meter – surcharge –	€ 30.80
1.5	Wall element, 50 cm high (to increase wall height to 300 cm)	€ 25.40
1.6	Infill panel, colored one side, 50 cm high, (RAL colors, hdc material) per linear meter – surcharge –	€ 10.30
1.7	Glass wall element, tinted	€ 95.70
1.8	Louvered blind, suitable for item 1.7	€ 39.80
1.9	Door element, light grey, lockable	€ 107.10
1.10	Door element, colored on one side, lockable (RAL colors) – surcharge –	€ 130.00
1.11	Door curtain, grey	€ 64.90
1.12	Reinforced infill panel (16 mm)	€ 77.00



1.1



1.1 and 1.4



1.7 and 1.8

### Floor coverings/floor construction

2.1	Velour carpeting (surcharge to cord carpeting price) in 6 standard colors	€ 4.10 per m <sup>2</sup>
2.2	Laminate, wood-grain finish (surcharge to cord carpeting price) (only in conjunction with items 2.3 or 2.4)	€ 28.20 per m <sup>2</sup>
2.3	Chipboard flooring panels (for use with floor coverings)	€ 25.00 per m <sup>2</sup>
2.4	False floor (plinth) (for use with floor coverings)	€ 27.00 per m <sup>2</sup>



2.2



2.2

### Ceiling and lighting

3.1	Modular ceiling sections (as for basic fittings package) 100 x 100 cm ( <b>Modular, type B stand</b> )	€ 29.50
3.2	Spotlight (50 W, as for basic fittings package)	€ 41.00
3.3	Spotlight (arm-mounted, 50 W)	€ 34.00
3.4	HQI spotlight (70 W)	€ 61.60



3.2



3.3

## Lettering, graphics and display media

The following prices 4.3 – 4.9 do not include any graphics.

- |     |   |                            |
|-----|---|----------------------------|
| 4.1 | Digital print for fascia, 200 x 30 cm, from printable file ( <b>Modular, type A stand</b> )                               | € 96.15                    |
| 4.2 | Digital print for trapezoidal fascia, 200 x 50 cm, from printable file ( <b>Modular, type B stand</b> )                   | € 121.80                   |
| 4.3 | Graphics panel, approx. 100 x 100 cm mounted in front of wall panel   | € 34.00                    |
| 4.4 | Clip-on frame, approx. A1   | € 32.10                    |
| 4.5 | DigiPrints, printed banners, vinyl film decals  | Price available on request |
| 4.6 | Advertising pylon, approx. 350 cm high ( <b>Modular, type B stand</b> )   | € 182.10                   |
| 4.7 | Advertising pylon, approx. 350 cm high with glass shelves ( <b>Modular, type B stand</b> )                                | € 297.50                   |
| 4.8 | Advertising pylon, approx. 350 cm high with slide viewer (without graphics) ( <b>Modular, type B stand</b> )              | € 341.60                   |
| 4.9 | Advertising pylon, approx. 350 cm high integrated display cabinet, lockable, illuminated ( <b>Modular, type B stand</b> ) | € 502.70                   |



4.3



4.4



4.6



4.7



4.8



4.9

## Stand furnishings

- |     |   |          |
|-----|---|----------|
| 5.1 | Table (as for basic fittings package, white) diameter 70 cm, approx. 70 cm high | € 37.10  |
| 5.2 | Table (as for basic fittings package, white) 70 x 70 cm, approx. 70 cm high     | € 37.10  |
| 5.3 | Table, white, 110 x 70 cm, approx. 70 cm high                                   | € 52.70  |
| 5.4 | Tall table, white, diameter 70 cm, approx. 110 cm high                          | € 53.90  |
| 5.5 | Chair (as for basic fittings package, black)                                    | € 27.70  |
| 5.6 | High chair/Bar stool (chrome/black)   | € 42.00  |
| 5.7 | Bar counter, grey/white, lockable 1 m element, approx. 100 x 50 x 108 (85) cm   | € 211.70 |



5.1



5.3



5.4



5.5



5.6



5.7

## Stand furnishings, cont.

- |      |  |          |
|------|--|----------|
| 5.8  | Information counter, grey, lockable<br>approx. 103 x 50 x 100 cm                   | € 170.60 |
| 5.9  | Sideboard, grey, lockable<br>80 cm high and 42 cm deep                             | € 75.20  |
| 5.10 | Literature display rack, wall-mounted<br>with 4 trays (A4 size),<br>ca. 98 x 30 cm | € 34.70  |
| 5.11 | Literature display rack, free-standing<br>with 3 trays (A4 size), 120–160 cm high  | € 54.60  |



5.8



5.9



5.10



5.11

## Kitchen fittings and furniture

**Water connections as well as electrical connections with a power rating of more than 3 kW need to be ordered separately.**

- |     |  |          |
|-----|--|----------|
| 6.1 | Kitchenette with refrigerator, sink,<br>twin hotplates and dish draining rack,<br>power connection approx. 7 kW,<br>size approx. 90 x 60 x 90 cm | € 301.40 |
| 6.2 | Refrigerator, approx. 60 x 60 x 85 cm<br>with freezer compartment  | € 94.90  |
| 6.3 | Sink cupboard unit with built-in water<br>heater, power connection approx. 2.5 kW,<br>size approx. 90 x 60 x 85 cm                               | € 125.70 |
| 6.4 | Electric coffeemaker (8-cup)   | € 22.50  |
| 6.5 | Steel shelf unit, free-standing,<br>approx. 100 x 30 x 200 cm  | € 89.80  |



6.1



6.3



6.4



6.5

## Display cabinets, plinths, shelving

- |      |   |          |
|------|---|----------|
| 7.1  | Tabletop display cabinet, grey,<br>lockable, approx. 95 x 50 x 100 cm                           | € 170.60 |
| 7.2  | Free-standing display cabinet, grey,<br>lockable, illuminated,<br>size approx. 70 x 70 x 200 cm | € 301.40 |
| 7.3  | approx. 50 x 100 x 200 cm   | € 363.00 |
| 7.4  | Plinth (w x d x h), grey<br>approx. 50 x 50 x 50 cm   | € 39.80  |
| 7.5  | approx. 50 x 50 x 80 cm   | € 39.80  |
| 7.6  | approx. 50 x 50 x 100 cm  | € 51.30  |
| 7.7  | approx. 100 x 100 x 50 cm   | € 52.70  |
| 7.8  | approx. 100 x 100 x 80 cm   | € 52.70  |
| 7.9  | approx. 100 x 100 x 100 cm  | € 56.50  |
| 7.10 | Shelf, white, with wall brackets for<br>level mounting, approx. 100 x 30 cm                     | € 28.20  |
| 7.11 | Shelf, white, with wall brackets for<br>inclined mounting, approx. 100 x 30 cm                  | € 28.20  |



7.1



7.2 and 7.3



7.6



7.10 and 7.11

## Electrical installations

- 8.1 "Schuko" power socket, 230 V, incl. fitting/cabling € 20.50
- 8.2 "Schuko" power strip with three sockets, 230 V, incl. fitting/cabling € 25.00



8.1



8.2

## Miscellaneous

- 9.1 Waste-paper basket € 5.20
- 9.2 Refuse bin € 18.00
- 9.3 Coat rack, fitted to wall element € 32.10
- 9.4 Table ashtray € 3.30
- 9.5 Hourly labor charge for additional work € 46.10



9.1



9.2



1.1 and 9.3



9.4

# Type D modular stand

Modular stand, recommended for stand sizes of 20 m<sup>2</sup> and above. Rental price for basic fittings, including assembly and dismantling: € 115 per m<sup>2</sup> and event.

## Basic fittings

### Carpeting

Disposable off-the-roll cord carpeting, available in 6 colors



### Perimeter partition walls

to adjacent stands and/or hall walls, constructed of 40 mm thick wall elements, light grey, 250 cm high

### 2 ceiling frame sections

of varying lengths (for connecting the advertising tower)

### 1 electrical distribution box

for connections of up to 3 kW with 2 available sockets, 230 V

### 1 spotlight

50 W each, one per 3 m<sup>2</sup> of floor space

### 1 wastepaper basket

## Basic fittings, depending on stand size

Stand area (m <sup>2</sup> ):	20/49	50/79	80/100
Size of cabin/No. of wall elements required (all cabins include 1 door element, lockable)	4 m <sup>2</sup> / 3	8 m <sup>2</sup> / 5	10 m <sup>2</sup> / 6
Advertising tower, 50x50x350 cm, includes rotating element, cube (50 x 50 cm), back-lit, incl. lettering on tower panel standard typeface Futura Bold (max. 40 letters per tower)	1	2	2
Table(s), dia. 70 cm or 70 x 70 cm	1	2	3
Chairs	4	8	12
Coat rack(s)	1	2	2

You'll find additional fittings for type D stands on pages 28 – 31.



Typical stand configuration with additional fittings



Basic fittings

## Additional fittings for type D stand

### Wall and cabin fittings

1.1	Wall element (as for basic fittings package) 1 m element	€ 37.80
1.2	1/2 m element	€ 34.65
1.3	Wall panel, colored one side, (RAL colors), per linear meter – surcharge –	€ 55.80
1.4	Wall element, 100 cm high (to increase wall height to 350 cm) per linear meter	€ 23.80
1.5	Wall panel, colored one side, (RAL colors), 100 cm high, per linear meter – surcharge –	€ 30.15
1.6	Glass wall element, tinted	€ 199.90
1.7	Louvered blind, suitable for item 1.8	€ 35.90
1.8	Door element, lockable	€ 123.00
1.9	Door element, colored on one side (RAL colors), – Surcharge –	€ 171.45
1.10	Door curtain	€ 61.50



1.1



1.3



1.6



1.7

## Floor coverings/floor construction

- 2.1 Velour carpeting in 6 standard colors (surcharge to cord carpeting price) € 4.10 per m<sup>2</sup>



- 2.2 Laminate, wood-grain finish (only in conjunction with items 2.3 or 2.4) (surcharge based on cord carpeting) € 28.20 per m<sup>2</sup>



2.2



2.2

- 2.3 Chipboard flooring panels (for use with floor coverings) € 25.00 per m<sup>2</sup>

- 2.4 False floor (plinth) (for use with floor coverings) € 26.95 per m<sup>2</sup>

## Ceiling and lighting

- 3.1 Ceiling frame section (as for basic fittings package) per linear meter € 21.20

- 3.2 Twin spotlight, (50 W, as for basic fittings package) € 49.40

- 3.3 Spotlight (arm-mounted, 150 W) € 53.20



3.2



3.3

## Lettering, graphics and display media

The following prices do not include graphics

- 4.1 Graphics panel, approx. 100 x 100 cm € 33.30

- 4.2 Clip-on frame, approx. 85 x 85 cm € 41.00

- 4.3 DigiPrints, printed banners, vinyl film decals Price available on request

- 4.4 Advertising tower with rotating element (as for basic fittings package) 50 x 50 x 350 cm € 202.40

- 4.5 Advertising tower, light grey, 50 x 100 x 350 cm € 239.65



4.1



4.2



4.5

## Stand furnishings

5.1	Table (chrome/white, as for basic fittings package) diameter 70 cm	€ 48.70
5.2	Table (chrome/white, as for basic fittings package) 70 x 70 cm	€ 41.00
5.3	Table, rectangular	€ 43.55
5.4	Tall table, chrome/white, diameter 60 cm	€ 57.70
5.5	PC counter, lockable	€ 205.00
5.6	Chair (aluminum/white, as for basic fittings package)	€ 33.30
5.7	High chair/Bar stool, aluminum/white	€ 42.95
5.8	Bar counter, 1 m element, lockable	€ 225.50
5.9	Information counter, 1 m element, lockable	€ 202.45
5.10	Sideboard, lockable	€ 71.75
5.11	Literature display rack, with 3 x A4 sections, wall-mounted	€ 37.20
5.12	Literature display rack, with 5 x A4 sections, free-standing	€ 53.80



5.1



5.4



5.5



5.7



5.8



5.9



5.11



5.12

## Kitchen fittings and furniture

**Water connections as well as electrical connections with a power rating of more than 3 kW need to be ordered separately.**

6.1	Kitchenette with refrigerator, sink, twin hotplates and dish draining rack, power connection approx. 4.5 kW, size approx. 90 x 60 x 90 cm)	€ 301.15
6.2	Refrigerator, approx. 60 x 60 x 85 cm with freezer compartment	€ 94.80
6.3	Sink cupboard unit with built-in water heater, power connection approx. 2.2 kW, size approx. 90 x 60 x 85 cm	€ 125.55
6.4	Electric coffee maker (8-cup)	€ 22.45
6.5	Shelf unit, free-standing, approx. 100 x 30 x 200 cm	€ 87.10
6.6	Worktop, 60 cm deep, with shelving unit underneath, per linear meter	€ 46.10



6.1



6.3



6.4



6.5

## Display cabinets, plinths, shelving

7.1	Tabletop display cabinet, lockable 99 x 53 x 91 cm	€ 173.00
7.2	Free-standing display cabinet, grey, lockable, illuminated, approx. 50 x 50 x 200 cm	€ 210.10
7.3	approx. 50 x 100 x 200 cm	€ 263.95
7.4	Plinth (w x d x h) approx. 50 x 50 x 50 cm	€ 39.80
7.5	approx. 50 x 50 x 75 cm	€ 39.80
7.6	approx. 50 x 50 x 100 cm	€ 51.25
7.7	approx. 100 x 100 x 50 cm	€ 52.60
7.8	approx. 100 x 100 x 75 cm	€ 52.60
7.9	approx. 100 x 100 x 100 cm	€ 56.40
7.10	Shelf, with wall brackets for level mounting, 100 x 30 cm	€ 34.65
7.11	Shelf, with wall brackets for inclined mounting, 100 x 30 cm	€ 46.10



7.1



7.2



7.6



7.10

## Electrical installations

8.1	Safety socket 230 V incl. fitting/cabling	€ 20.50
8.2	3-gang safety socket 230 V incl. fitting/cabling	€ 25.00



8.1



8.2

## Miscellaneous

9.1	Waste-paper basket	€ 5.15
9.2	Refuse bin	€ 17.90
9.3	Coat rack, fitted to wall element	€ 32.10
9.4	Table ashtray	€ 3.30
9.5	Hourly labor charge for additional work	€ 46.10



9.1



9.2



9.3



9.4

# Line-type modular stands

Modular stand, recommended for stand sizes of 30 m<sup>2</sup> and above. Rental price for basic fittings, including assembly and dismantling: € 135 per m<sup>2</sup> and event.

## Basic fittings

### Carpeting

Disposable off-the-roll cord carpeting, available in 6 colors



### Wall elements

to adjacent stands and/or hall walls, light grey (Leitner system), grid module 200 cm wide, overall height of element: 300 cm

### Ceiling framing profiles

forming a 200 x 200 cm grid, including all necessary bracings and pillar supports

### Graphics panel

200 x 300 cm frame assembly with glass infill panel, 8 mm thick, incl. lettering in standard typeface Futura Bold (up to a maximum of 20 letters) 2 x frame assemblies (300 x 100 cm or 300 x 200 cm, depending on module/size) with textile infill panel, white, excluding graphics

### Lighting

one spotlight (100 W) per 3 m<sup>2</sup> of stand area

### 1 electrical distribution box

for connections of up to 3 kW with 2 available sockets, 230 V

### Basic fittings, depending on stand size

Stand area (m <sup>2</sup> ):	30/59	60/89	90/150
Size of cabin (incl. 1 door element, lockable)	4 m <sup>2</sup>	8 m <sup>2</sup>	10 m <sup>2</sup>
Coat rack(s)	1	2	2



Typical stand configuration with additional fittings



Basic fittings

We'll be happy to provide you with further information about additional fittings and furniture for line-type stands.

## Truss-type modular stands

Available as a modular stand element or as an extension or module for any type of stand construction.

### Prices per event for Truss modular stand (basic fittings)

Enclosed area:	Price:
12 to 30 m <sup>2</sup>	€ 67.00 per m <sup>2</sup>
31 to 60 m <sup>2</sup>	€ 49.00 per m <sup>2</sup>
61 to 100 m <sup>2</sup>	€ 40.00 per m <sup>2</sup>
101 to 150 m <sup>2</sup>	€ 35.00 per m <sup>2</sup>
over 150 m <sup>2</sup>	Price available on request

## Basic fittings

### Truss system

Supported on 4 corner columns, including all necessary bracings, overall height approx. 350 cm. Available as modular stand element or extension for any type of stand construction.

### Lighting

1 spotlight (150 W) per 5 m<sup>2</sup> of stand area

### 1 electrical distribution box

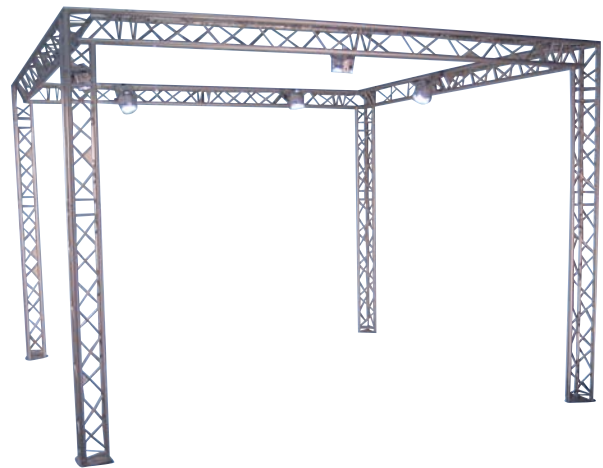
for connections of up to 3 kW with 2 available sockets, 230 V

We'll be happy to provide you with further information about additional fittings and furniture for truss-type stands.

For outdoor use, you can order a truss system (without any installations or additional fittings). Prices are available on request.



Typical stand configuration with additional fittings



Basic fittings

**Fittings for your  
tradeshow stand**



# Floor coverings

## Contact:

Frank Zwingmann  
Tel. +49 511 89-32227  
frank.zwingmann@messe.de

charges and pick out the right floor covering for your stand directly in OBS. Our carpeting comes in 200 cm-wide rolls, with three different quality categories and eight colors to choose from, making it easy to find the ideal floor covering for your stand!

Attractive, yet rugged and stain-resistant; reasonably priced. Those are the essential features your stand floor covering needs to have. If you are organizing your own stand construction, you can order your floor covering the quick and easy way through Deutsche Messe. Save on expensive shipping

The selection of carpeting for exhibitors with a type A, B or D modular stand or a line-type or truss type modular stand is linked to the specific additional fittings for the relevant stand type.

### Needle felt carpeting

€ 8.14 per m<sup>2</sup>



Color no.: NF50  
Description: light grey



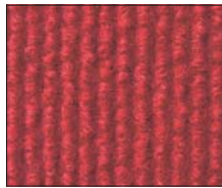
Color no.: NF51  
Description: grey



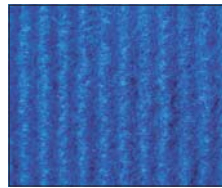
Color no.: NF52  
Description: anthracite



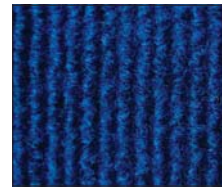
Color no.: NF53  
Description: beige



Color no.: NF54  
Description: red



Color no.: NF55  
Description: blue



Color no.: NF56  
Description: dark blue



Color no.: NF57  
Description: green

### Ribbed carpeting

€ 8.65 per m<sup>2</sup>



Color no.: RP50  
Description: light grey



Color no.: RP51  
Description: grey



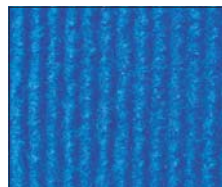
Color no.: RP52  
Description: anthracite



Color no.: RP53  
Description: beige



Color no.: RP54  
Description: red



Color no.: RP55  
Description: blue



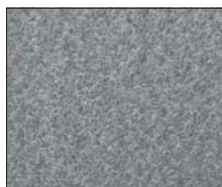
Color no.: RP56  
Description: dark blue



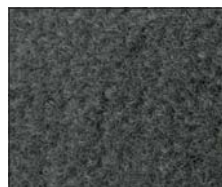
Color no.: RP57  
Description: green

### Velour carpeting

€ 11.33 per m<sup>2</sup>



Color no.: VL50  
Description: light grey



Color no.: VL51  
Description: grey



Color no.: VL52  
Description: anthracite



Color no.: VL53  
Description: beige



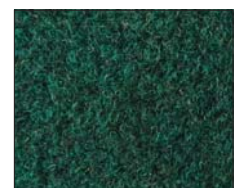
Color no.: VL54  
Description: red



Color no.: VL55  
Description: blue



Color no.: VL56  
Description: dark blue



Color no.: VL57  
Description: green

# Rental furniture and kitchen equipment

## Contact:

Frank Zwingmann  
Tel. +49 511 89-32227  
frank.zwingmann@messe.de

Whether you're interested in designer furniture or technical appliances – we have a huge selection of furniture and equipment to choose from. Customize your own stand interior by adding tables, chairs, armchairs, sofas, kitchen equipment and whatever else you like. You can also rent electrical appliances

like espresso machines or fridges. Please bear in mind that the actual objects may deviate slightly from these illustrations.

For exhibitors with type A, B, D, line, or truss modular systems, we recommend ordering the fittings specifically designed for your stand type.

Information on further fittings and appliances is available on request.

## Color codes for rental furniture

1 black	4 blue	7 dark grey	lockable
2 white	5 red	8 yellow	illuminated
3 grey	6 wood decor	9 additional color(s)	

## Seating



Art. no.: S50 1 4 7      
Upholstered chair ISO € 27.19



Art. no.: S51 1 4 7      
Upholstered chair Dublin € 30.59



Art. no.: S52 1 3 4 5    
Upholstered chair Bono € 17.72



Art. no.: S53 1          
Upholstered chair Bono € 26.57



Art. no.: S54 1 4        
Upholstered chair Kelly € 37.08



Art. no.: S55 4          
Upholstered chair Alfa € 48.41



Art. no.: S56 2 3        
Leather chair Arlo € 17.72



Art. no.: S57 1 2        
Leather chair Milano € 26.57



Art. no.: S58 1          
Chair Tokyo € 34.61



Art. no.: S59 1          
Chair Tokyo € 34.61



Art. no.: S60 7          
Plastic chair Europa € 16.69



Art. no.: S61  
Chair Breeze 

1	2	3	4		
---	---	---	---	--	--

 € 26.57



Art. no.: S62  
Chair Beo 

2	4	8	9		
---	---	---	---	--	--

 € 19.57



Art. no.: S63  
Chair Nuremberg 

7					
---	--	--	--	--	--

 € 16.69



Art. no.: S64  
Chair Dr. No 

2	3				
---	---	--	--	--	--

 € 29.87



Art. no.: S65  
Chair Visavis 

1					
---	--	--	--	--	--

 € 73.13



Art. no.: S66  
Chair Sam 

1					
---	--	--	--	--	--

 € 4.94



Art. no.: S67  
Chair Pico 

4	5	6	9		
---	---	---	---	--	--

 € 29.87



Art. no.: S68  
Chair Pico, with armrests 

6					
---	--	--	--	--	--

 € 37.70



Art. no.: S69  
Chair Fly 

6					
---	--	--	--	--	--

 € 31.93



Art. no.: S70  
Chair Baba 

6					
---	--	--	--	--	--

 € 36.05



Art. no.: S71  
Cantilever chair, wood 

1					
---	--	--	--	--	--

 € 27.09



Art. no.: S72  
Chair Rio 

9					
---	--	--	--	--	--

 € 25.75



Art. no.: S73  
Chair Barcino 

1	3	6			
---	---	---	--	--	--

 € 26.37



Art. no.: S74  
Easy chair Manta 

1	4	5			
---	---	---	--	--	--

 € 52.53



Art. no.: S75  
Easy chair Havana 

1					
---	--	--	--	--	--

 € 55.62



Art. no.: S76  
Easy chair Alki 

1	4				
---	---	--	--	--	--

 € 58.92



Art. no.: S77  
Leather couch  
W/D/H: 134/80/85 cm 

1					
---	--	--	--	--	--

 € 254.41



Art. no.: S78  
Leather easy chair  
W/D/H: 76/80/85 cm 

1					
---	--	--	--	--	--

 € 188.08

## Tables



Art. no.: T50  
Table (round) Ron  
Ø ca. 75 cm, height 72 cm € 38.73



Art. no.: T51  
Table (round) Black Jack  
Ø 60 cm, height 72 cm € 40.17



Art. no.: T52  
Table (round) Blackwood  
Ø 60 cm, height 72 cm € 54.49



Art. no.: T53  
Table (round) Siena  
Ø 70 cm, height 74 cm € 52.02



Art. no.: T54  
Table (round) Palma  
Ø ca. 65 cm, height 72 cm € 37.70



Art. no.: T55  
Table (round) Ron  
Ø 120 cm, height 72 cm € 57.47



Art. no.: T56  
Table (rectangular) Standard  
W/D/H: 120/ca. 65/72 cm € 38.11



Art. no.: T57  
Table (rectangular) Paris  
W/D/H: 120/70/72 cm € 61.29



Art. no.: T58  
Table (square) Standard  
W/D/H: ca. 75/75/72 cm € 33.06



Art. no.: T59  
Table (square) Nizza  
W/D/H: 70/70/72 cm € 43.78



Art. no.: T60  
Table (rectangular) Standard  
W/D/H: 160/ca. 75/72 cm € 49.96



Art. no.: T61  
Table (square) Lille-Lyon  
W/D/H: ca. 65/65/35 cm € 30.18



Art. no.: T62  
Table (rectangular) Toulouse  
W/D/H: 120/70/40 cm € 36.87



Art. no.: T63  
Glass table  
W/D/H: 115/75/44 cm € 115.05



Art. no.: T64  
Glass table  
Ø 51 cm, height-adjustable  
(50–90 cm) € 66.95

## Office furniture



Art. no.: B50  
Sideboard  
W/D/H: 120/43/72 cm € 59.47



Art. no.: B51  
Sideboard  
W/D/H: 80/40/72 cm € 52.05



Art. no.: B52  
Sideboard counter  
W/D/H: 100/50/90 cm € 91.57



Art. no.: B53        
 Sideboard, pear-wood decor  
 W/D/H: 120/45/87 cm € 92.91



Art. no.: B54        
 Storage cabinet, one door  
 W/D/H: 60/40/180 cm € 91.57



Art. no.: B55        
 Storage cabinet, two doors  
 W/D/H: 120/40/165 cm € 94.04



Art. no.: B56        
 Swivel chair  
 € 31.00



Art. no.: B57        
 Swivel chair with armrests  
 € 35.43



Art. no.: B58        
 Swivel chair with armrests, leather  
 € 65.92



Art. no.: B59        
 Drawer pedestal, mobile  
 W/D/H: ca. 45/65/55 cm € 64.79



Art. no.: B60        
 Desk with mobile drawer pedestal  
 W/D/H: ca. 120/65/72 cm € 47.59



Art. no.: B61        
 Desk with mobile drawer pedestal  
 W/D/H: ca. 160/75/72 cm € 95.38



Art. no.: B62        
 Table "Big"  
 W/D/H: 180/80/72 cm € 67.80



Art. no.: B63        
 Lockable storage cabinet  
 W/D/H: 60/50/195 cm € 116.18



Art. no.: B64        
 Partition wall  
 W/H: ca. 140/175 cm € 47.38



Art. no.: B65        
 Flip chart  
 € 46.35



Art. no.: B66        
 Wastepaper basket  
 € 6.70

## High tables & bar stools



Art. no.: H50        
 Bar stool, Z-frame  
 € 22.97



Art. no.: H51        
 Bar stool, Z-frame, with backrest  
 € 27.09



Art. no.: H52        
 Bar stool Bruno  
 € 35.12



Art. no.: H53  
Bar stool with backrest € 27.19



Art. no.: H54  
Bar stool Rodney € 35.74



Art. no.: H55  
Bar stool Arlo € 35.12



Art. no.: H56  
Bar stool Breeze € 40.79



Art. no.: H57  
Bar stool Hoop € 38.63



Art. no.: H58  
Bar stool with full backrest Pico € 37.70



Art. no.: H59  
Bar stool Lyra € 61.29



Art. no.: H60  
Bar stool Baba € 43.26



Art. no.: H61  
Bar stool Lem € 77.25



Art. no.: H62  
Bar stool Bombo € 72.51



Art. no.: H63  
High swivel chair, upholstered € 66.44



Art. no.: H64  
High table Black Jack  
Ø 60 cm, height 110 cm € 48.93



Art. no.: H65  
High table Blackwood  
Ø 60 cm, height 110 cm € 65.61



Art. no.: H66  
High table Florence  
Ø 70 cm, height 110 cm € 84.67



Art. no.: H67  
High table Florence  
Ø 70 cm, height 110 cm € 57.30



Art. no.: H68  
High table Rialto  
Ø 55 cm, height 67-90 cm € 84.98



Art. no.: H69  
High table Palma  
Ø 60 cm, height 110 cm € 49.03



Art. no.: H70  
High table Palma with middle shelf  
Ø 60 cm, height 114 cm € 49.85



Art. no.: H71  
High table Palma with middle shelf  
Ø 80 cm, height 114 cm € 54.49



Art. no.: H72  
High table Frankfurt  
Ø 80 cm, height 110 cm € 54.49

## Miscellaneous



Art. no.: V50 2 3   
 Glass showcase with cupboard  
 W/D/H: 100/50/90 cm € 117.01



Art. no.: V51 9   
 Glass showcase  
 W/D/H: 100/50/90 cm € 166.86



Art. no.: V52 9   
 Tower showcase, glass  
 W/D/H: 50/50/200 cm € 170.36



Art. no.: V53 2 3   
 Glass showcase, high, with cupboard  
 W/D/H: 100/50/ca.190 cm € 213.00



Art. no.: V54 9   
 Glass showcase, high  
 W/D/H: 100/50/200 cm € 243.39



Art. no.: V55 9   
 Stand-up computer workstation  
 W/D/H: 90/75/112 cm € 153.57



Art. no.: V56 2   
 Multimedia pillar  
 W/D/H: 54/52/114 cm € 91.57



Art. no.: V57 9   
 Counter Frankfurt, with power socket  
 W/D/H: 90/43/110 cm € 128.75



Art. no.: V58 9   
 Counter Köln, curved  
 W/D/H: 135/48/110 cm € 154.50



Art. no.: V59 9   
 Designer counter Modena, curved  
 W/D/H: 136/79/110 cm € 218.36



Art. no.: V60 2 3   
 Bar/info counter  
 W/D/H: ca. 110/50/114 cm € 91.57



Art. no.: V61 3   
 Bar/info counter  
 W/D/H: ca. 120/50/114 cm € 108.15



Art. no.: V62 2   
 Bar/info counter  
 W/D/H: 75/55/114 cm € 44.29



Art. no.: V63 3   
 Speaker's podium  
 W/D/H: 60/48/124 cm € 127.72



Art. no.: V64 9   
 Literature rack, narrow (Plexiglas)  
 W/D/H: ca. 57/50/160 cm € 53.15



Art. no.: V65 3   
 Literature rack, 5 tilted shelves  
 W/D/H: 50/28/165 cm € 60.77



Art. no.: V66 3   
 Literature rack, 3 tilted shelves  
 W/D/H: 85/40/178 cm € 56.65



Art. no.: V67 9   
 Literature rack, wide (Plexiglas)  
 W/D/H: 97/35/170 cm € 53.15



Art. no.: V68 9   
 Literature rack  
 W/D/H: 116/35/162 cm € 38.73





Art. no.: V89        
 Umbrella stand € 17.72



Art. no.: V90        
 Standing ashtray € 16.38



Art. no.: V91        
 Handbag rack, swiveling  
 Height 140–170 cm € 40.17



Art. no.: V92        
 Info stand, DIN A4 size  
 W/H: 30/89 cm € 24.72

## Kitchen items



Art. no.: K50        
 Kitchenette unit, 3 kW  
 W/D/H: ca. 100/60/95 cm € 226.81



Art. no.: K51        
 “Kitcase” compact kitchen, 6 kW  
 W/D/H: 104/80/172 cm € 413.65



Art. no.: K52        
 Kitchen sink with cupboard, 2.2 kW  
 W/D/H: ca. 100/60/95 cm € 91.16



Art. no.: K53        
 Kitchen sideboard  
 W/D/H: 100/50/85 cm € 47.07



Art. no.: K54        
 Refrigerator, 140 l  
 W/D/H: ca. 55/60/85 cm € 75.50



Art. no.: K55        
 Refrigerator for bottles  
 W/D/H: ca. 60/60/140 cm € 139.36



Art. no.: K56        
 Refrigerator with freezer compartment  
 W/D/H: ca. 56/60/165 cm € 131.12



Art. no.: K57        
 High-speed dishwasher (approx. 7 min. cycle)  
 Connected wattage: 6.3 kW  
 W/D/H: 60/60/86 cm € 524.06



Art. no.: K58        
 Dishwasher (approx. 35 min. cycle)  
 Connected wattage: 2.5 kW  
 W/D/H: 60/60/86 cm € 235.05



Art. no.: K59        
 Coffee maker (for 8 cups)  
 Connected wattage: 1 kW  
 W/D/H: 15/28/30 cm € 24.10



Art. no.: K60        
 Coffee maker, double (for 2 x 8 cups)  
 Connected wattage: 1.5 kW  
 W/D/H: 33/28/30 cm € 47.07



Art. no.: K61        
 Coffee maker, for coffee pads  
 Connected wattage: 1.5 kW  
 W/D/H: 25/33/30 cm € 70.04



Art. no.: K62        
 Espresso maker, approx. 20 cups/hour  
 Connected wattage: 1.5 kW  
 W/D/H: 28/34/40 cm € 356.07



Art. no.: K63        
 Espresso maker, approx. 60 cups/hour  
 Connected wattage: 2 kW  
 W/D/H: 41/39/47 cm € 497.70



Art. no.: K64        
 Ice cube maker, 50 kg capacity  
 Connected wattage: 0.6 kW  
 W/D/H: 40/42/70 cm € 428.69



# Transport and exhibitor insurance

## Contact:

Karin Bollmann  
Tel. +49 511 89-33331  
karin.bollmann@messe.de


Leave your worries at home and insure your exhibition stand, your exhibit materials and any other equipment by taking out a special transport and exhibitor insurance policy prior to the show.

Deutsche Messe has negotiated a general policy with a reputable insurance company at special rates which you can look up in OBS.

The premium rate depends on the value of the items to be insured multiplied by a percentage based on the category of the insured items.

Protect yourself from the financial impact of unforeseen losses!





**Online Business  
Service (OBS)**

# OBS access data and authorization

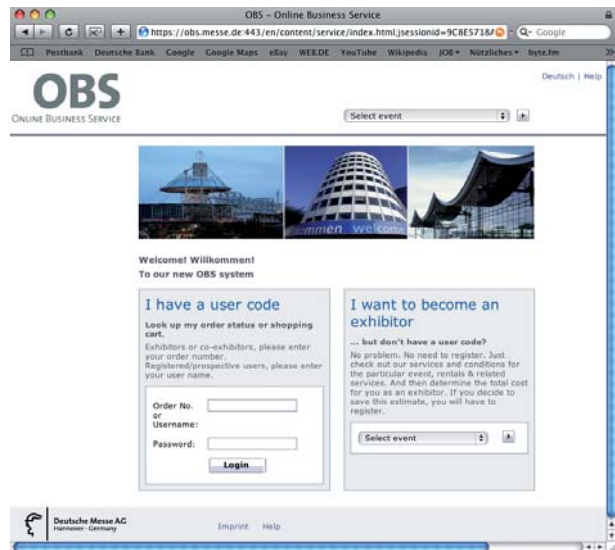
## Access data

The following data is mailed to you along with your stand confirmation notice:

- Order no. (event-related)
- Password

You can prepare your service orders before receiving your stand confirmation by using the “Cost planner” tool. Past exhibitors can do this using their login from the previous event.

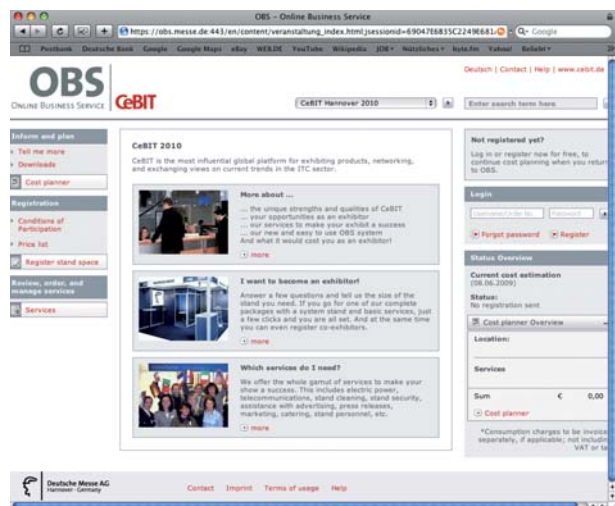
You can order your services from Deutsche Messe quickly and conveniently via [www.obs.messe.de](http://www.obs.messe.de)



## Deadlines

As soon as hall layout planning has been finalized, Deutsche Messe will mail you your notice of stand confirmation as well as your OBS access data (depending on when you registered, this will be six months or less before the tradeshow begins). You can use this data to log into [www.obs.messe.de](http://www.obs.messe.de). You can prepare your service orders ahead of time by using the “Cost planner” tool in OBS.

The order deadlines are contained on the checklist in the “Services” area of OBS as well as the relevant order forms. After the expiration of these deadlines, we cannot guarantee the availability of every type of service.



## Ordering authorization

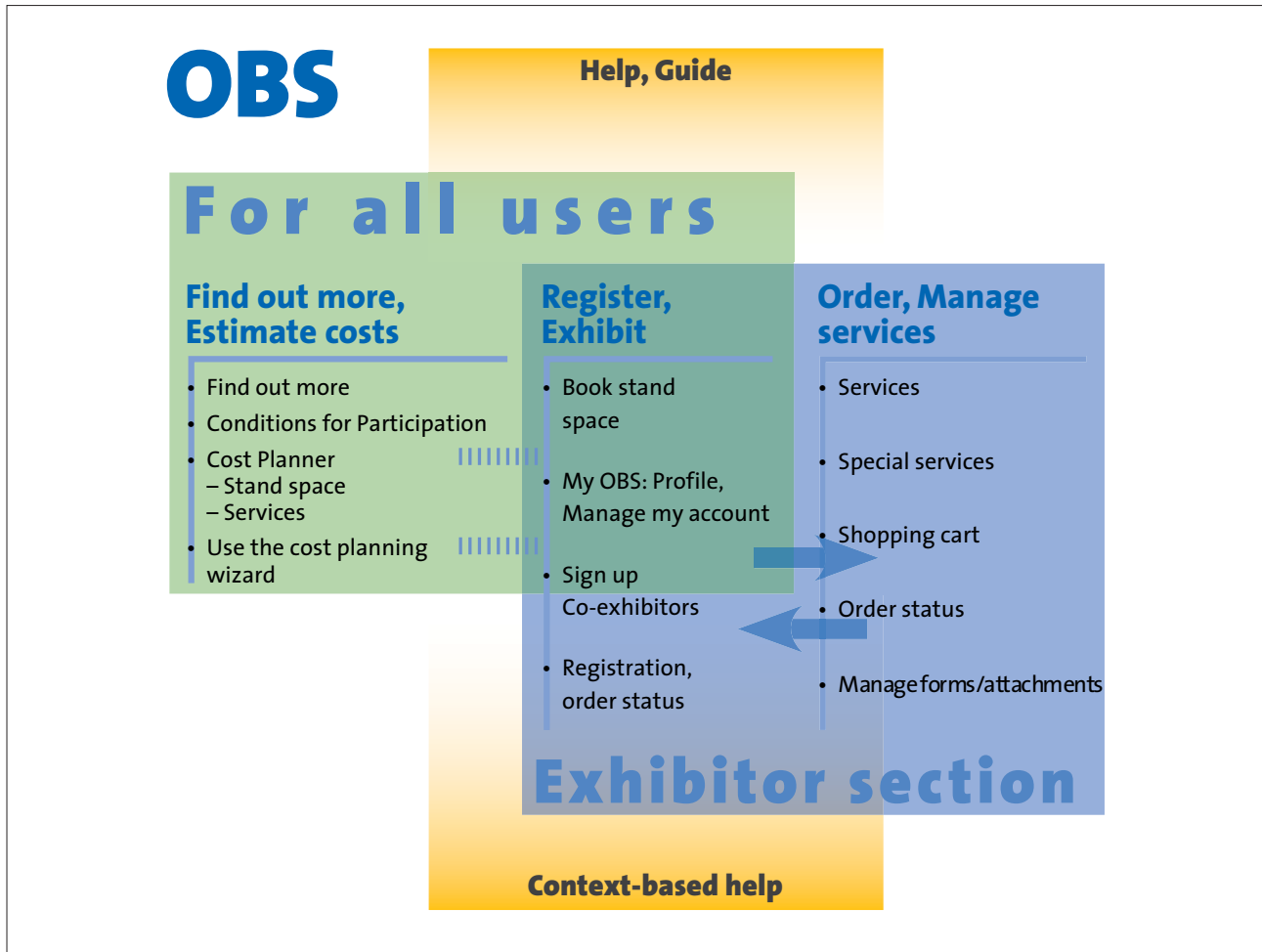
As an exhibitor you can give your staff members or external service partners access to OBS at any time. You decide what level of user authority to grant them. To do this, you define co-users within

the system and grant them authority to access particular forms: subsequently the co-users can be blocked.

# Ordering using OBS

## Contact:

OBS hotline  
Tel. +49 511 89-37000  
obs@messe.de



## Logging in

Click the “Login” button on the start page (www.obs.messe.de) to reach the login page. From here, simply enter the access data you received along

with your stand confirmation notice. Be sure to replace your primary password with a new password of your choosing.

## Start page

After successfully logging in, you’ll be taken directly to the start page, where you can view your exhibitor information. Use the menu bar on the left-hand side to access the individual areas in OBS. Select the “Tell me more” option to find out about new features in OBS, its services in general and/or new and special service highlights. To order, click the

“Services” button. You can prepare and compare alternative orders ahead of time by using the “Cost planner” tool; then simply move the services you plan to keep to your “Shopping cart” later. Press the “Help” button in the navigation bar at the top if you have any questions or need any assistance.

## Services

The first thing you see when you click “Services” is the main categories of our service offerings. Uncheck the boxes to temporarily hide any uninteresting categories in the drop-down list. Then click on the individual categories to see more.

For fair package customers, a number of key services – for example, modular stand construction, electrical power points and stand cleaning – are already included in the price. You can supplement these services on an individual basis.

## Selecting services

Select the desired services by clicking items, checking boxes, entering text etc. as appropriate. To order some services, you may need to submit additional materials, for example, stand diagrams,

images or logos. You can upload these materials to the OBS server using the appropriate upload feature, then apply them to the relevant service orders.

## Cost planner

Even while you are still deciding about your registration, you can use the “Cost planner” tool to plan and calculate the cost of all services for your potential tradeshow appearance and compare

the cost of different service options. You can then transfer the services you ultimately wish to order to your shopping cart.

## Shopping cart

Every service you plan to order goes in your shopping cart first. In the “Shopping cart” section, you can then modify or delete any items. You then dispatch an order to Deutsche Messe for the final contents of your shopping cart, which does not

become a legally binding order until you submit it. If there are any services you do not wish to order, simply delete them from the shopping cart or put them back in the Cost planner section for subsequent processing.

## Order status

You do not need to order all your services at the same time. By clicking the “Order status” button, you can get an overview of all the orders placed up

to now. This is especially helpful if your tradeshow participation has been prepared by several different staff members or even an outside agency.

## Cancellation/Partial cancellation

You can cancel your orders in whole or in part. Please keep in mind the cancellation deadlines and be advised that cancellation charges may apply.

## Orders by fax

Should you elect to send your orders via printed forms, you will receive a service binder containing personalized forms. Simply fill these forms out and fax them to Deutsche Messe at Fax +49 511 89-36666.



Deutsche Messe  
Hannover · Germany

Deutsche Messe  
Messegelände  
30521 Hannover  
Germany  
Tel. +49 511 89-0  
Fax +49 511 89-32626  
info@messe.de