



Communications & Continuity of Government

- Leveraging Satellites to Eliminate
Communications Barriers

Britt Lewis
Intelsat General Corporation
ISCe 2008





Commercial satellites are an essential component to achieving immediate communications interoperability

- “Response operations were impeded because of a lack of adequate satellite communications capability.”

Hurricane Katrina Task Force





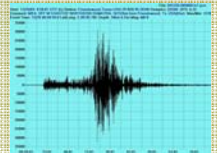
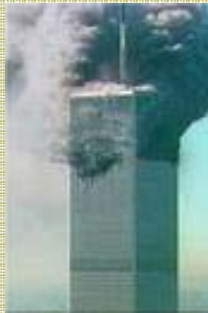
Commercial satellite often is the only reliable and available communications media

- 2001 US-based Terrorist Attacks
 - **Provided space segment** for 1st Responders, Disaster Relief organizations and Broadcasters.
 - *Corps of Engineers deployed their DTOS Network - first service greater than cell phone south of 14th St. NYC.*
- 2004 Tsunami
 - **Provided space segment** and managed solutions for Disaster Recovery efforts.
 - **Service supported relief organizations by providing connectivity for comms and DNA recognition efforts.**
- 2005 Hurricane Katrina / Rita
 - **Provided space segment services** for relief organization, restored continuity for enterprise users and managed services for FEMA.
 - **Provided space segment** to Rescue 21, restored ship-to-shore radio service for the USCG.
 - **Space segment** for major recovery site at NASA Stennis
- 2005 SeaMeWe3 Cable Failure
 - **Multiple E3 duplex ITS circuits** to restore Internet access in South East Asia
- 2005 Pakistan Earthquake
 - **Space segment** and managed offerings to support the military & relief organizations in the rescue mission.
- 2007 Taiwan Earthquake
 - **Space segment** and large managed circuits to restore carriers and service providers who were effected by the undersea transoceanic cable disturbance.
- 2007 California Fires
 - **Provided space segment** to support Command Center ops in San Diego



Government Continuity: Planning & Execution - Communications

Planning, Training, Preparation



Plan



Train



Prepare

Pre-position equipment for easy access during disaster

Disaster Response

First Day



Land Mobile Radio



MSS

First Few Days +



VSAT



Mobile Command Center



Cellular Backhaul via FSS

Situational Awareness



Damage assessment & situational awareness via satellite imaging and UAV surveillance

Government Continuity: Protecting Critical Infrastructure

- HQ connected to HQ Overseas via fiber for data replication on regular basis
 - During an event (e.g., hurricane), command is moved to the Forward Area Command Post
 - The Forward Area has redundant connectivity to DISN via terrestrial and satellite links
 - Necessary data can be replicated via connection to the DISN via HQ Overseas
- Requires both terrestrial and satellite links

