



**Program Executive Office  
Command, Control, Communications,  
Computers and Intelligence (PEO C4I)**

# **Communications Program Office (PMW/A 170) U.S. Navy Commercial SATCOM Overview**

## **ISCe Conference**

**June 12, 2008**

**Kai Tang**

**SATCOM Division Director**

**Distribution Statement A: Approved for public release; distribution is unlimited (6 June 2008)**

***Information Dominance;  
Anytime, Anywhere...***



**PEOC4I.NAVY.MIL**



# Agenda

- Navy Day Schedule
- Commercial SATCOM Overview
- PEO C4I Organization
- Current and Potential Commercial SATCOM
- Navy SATCOM Capability Growth
- Current Satellite Connectivity
- Navy SATCOM Roadmap
- Considerations
- Acquisitions – Lessons Learned
- Acquisitions – Looking Forward
- Closing
- Points of Contact



# Navy Schedule

## Navy Day Schedule

- Navy Commercial SATCOM Background/Strategy - Kai Tang
- Commercial Broadband Satellite Program (CBSP) - Melinda Ratz
- Shipboard Networks - Kurt Fisco
- Airborne Networking - Karl Gutekunst
- Navy Expeditionary Combatant Command (NECC) - Kevin Washburn
- Submarine Communications – Mike Hutter
- Acquisition and Fielding of Capability - Kurt Fisco
- SPAWAR Contracting Process - Karen Rainville

Thursday Noon Keynote Address - CAPT John Pope,  
Navy Communications Program Office, PMW/A 170



# Commercial SATCOM - Overview

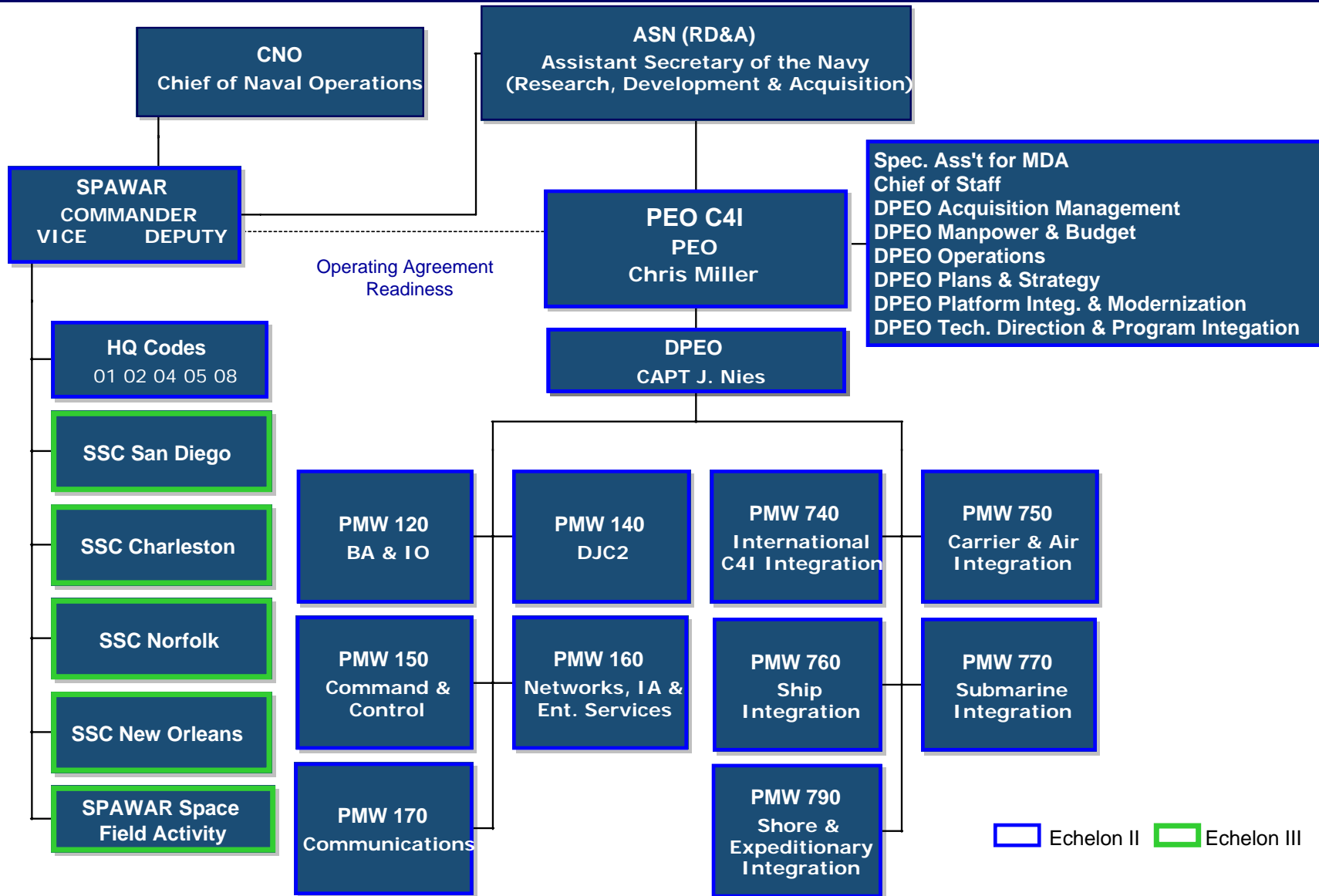


- PEO C4I is the single largest DoD customer for Commercial SATCOM
- PEO C4I centrally manages, budgets, and funds Commercial SATCOM as established programs of record
- Roles and Responsibilities:
  - **Office of the Chief of Naval Operations**
    - Requirements Validation and Funding
  - **Program Executive Office, Command, Control, Communications, Computers and Intelligence (PEO C4I), Navy Communications Program Manager (PMW/A 170)**
    - Acquisition
    - Program Management
    - Life Cycle Management
  - **Space and Naval Warfare Systems Command (SPAWAR)**
    - Office of the Chief Engineer
    - Contracts Support
  - **Naval Network Warfare Command (NETWARCOM)**
    - Naval Component Commander to US Strategic Command
      - Operations
      - Requirements Generation



# PEO C4I

## Organizational Alignment





# Current and Potential Commercial SATCOM



## General SATCOM Procurement Characteristics

- Commercial Terminals/Antenna Control Units/Modems
  - Designed to Navy specifications or
  - Modified COTS or
  - COTS
- Leased Space Segments
- Leased Commercial Gateways or
  - DoD Teleport Sites
- Leased Terrestrial Connectivity

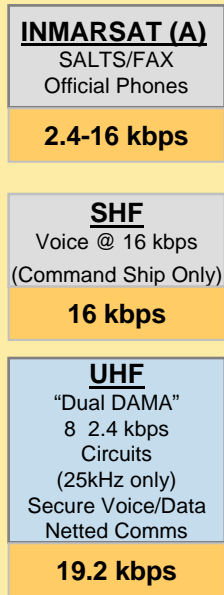
## Current and Potential Programs

- Commercial Wideband Satellite Program (CWSP)
  - PMW/A 170
- Commercial Broadband Satellite Program (CBSP)
  - PMW/A 170
- Television- Direct to Sailors (TV-DTS)
  - PMW/A 170
- Inmarsat
  - PMW/A 170
- Airborne Inmarsat
  - PMW 750/PMW/A 170/NAVAIR
- Naval Expeditionary Combatant Command (NECC)
  - PMW 790
- Submarine Communications
  - PMW 770

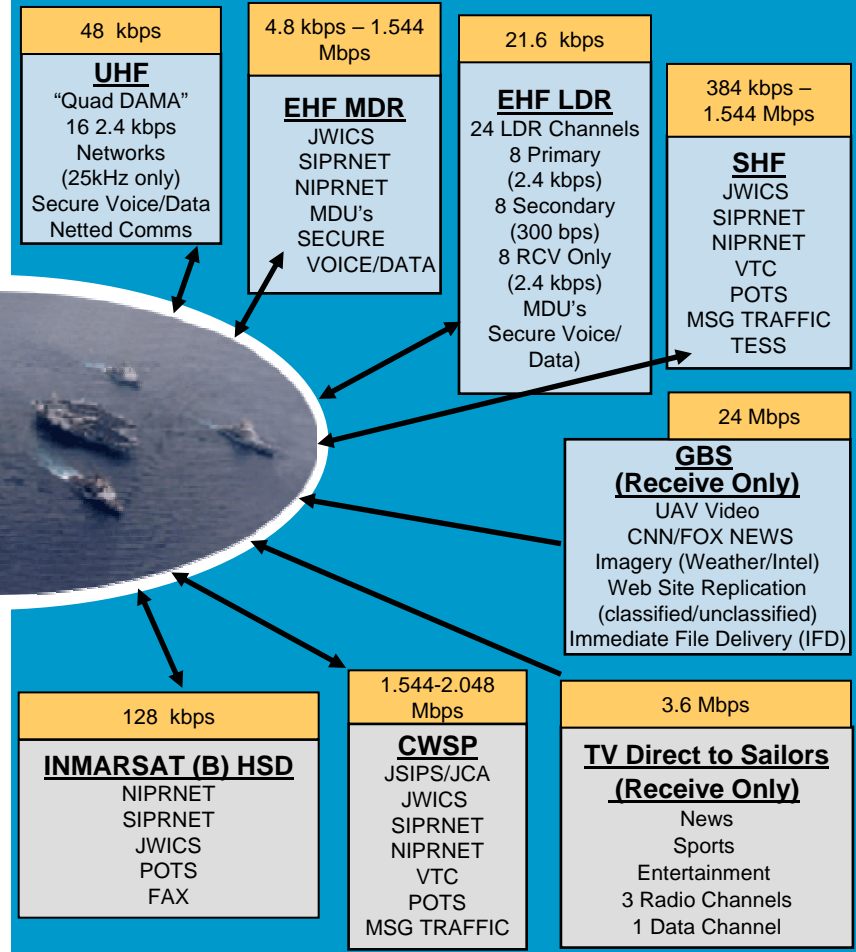


# Navy SATCOM Capability Growth

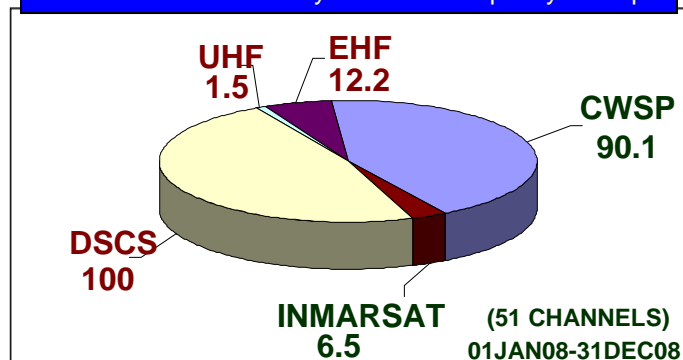
## Desert Storm c.1990



## Today



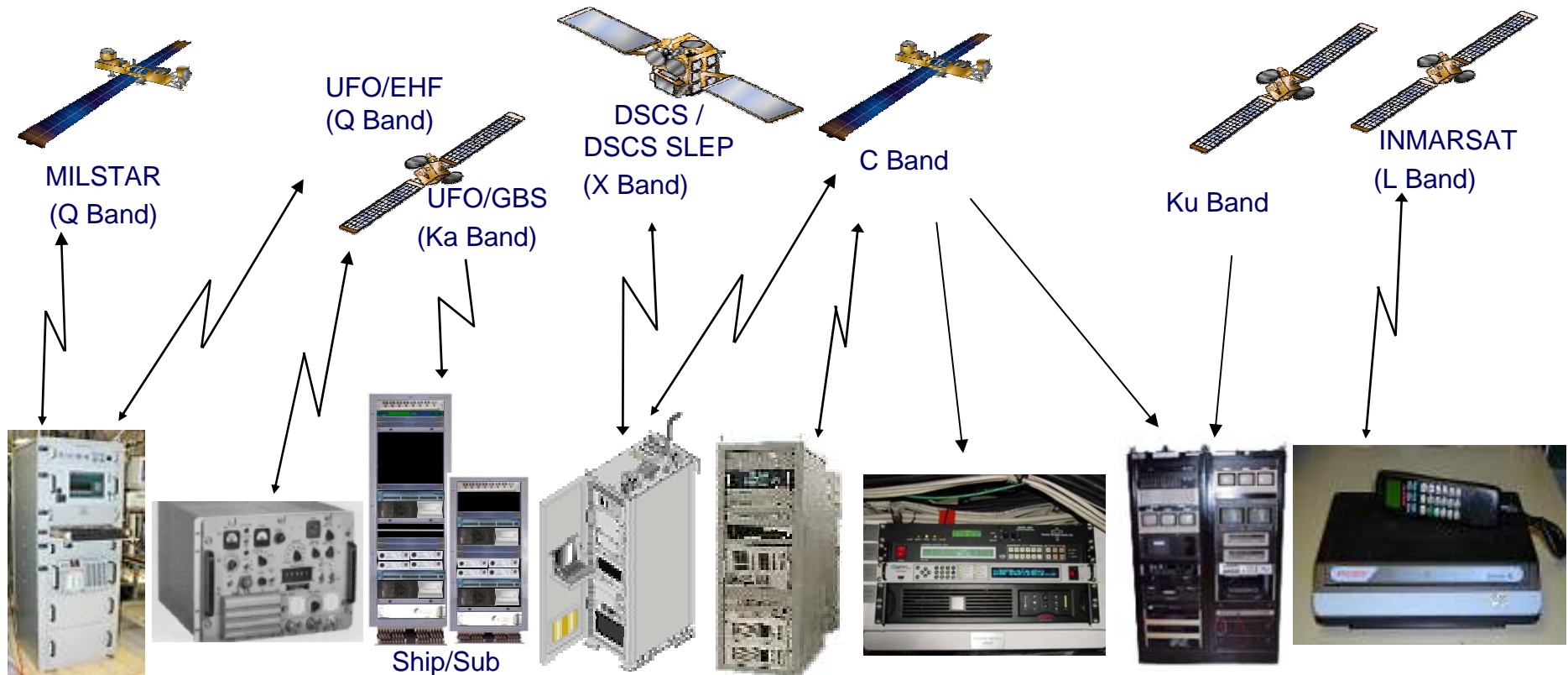
Current Worldwide Navy SATCOM Capacity in Mbps







# Current Satellite Connectivity



**Protected (EHF)**  
USC-38(V)

**Narrowband**  
WSC-3(V)

**GBS**  
USR-10(V)

**DSCS**  
WSC-6(V)5  
WSC-6(V)7  
WSC-6(V)9

**CWSP**  
WSC-8(V)1  
WSC-8(V)2

**CBSP**  
USC-69(V)1

**TV-DTS**  
OE-556/U  
OE-556A/U

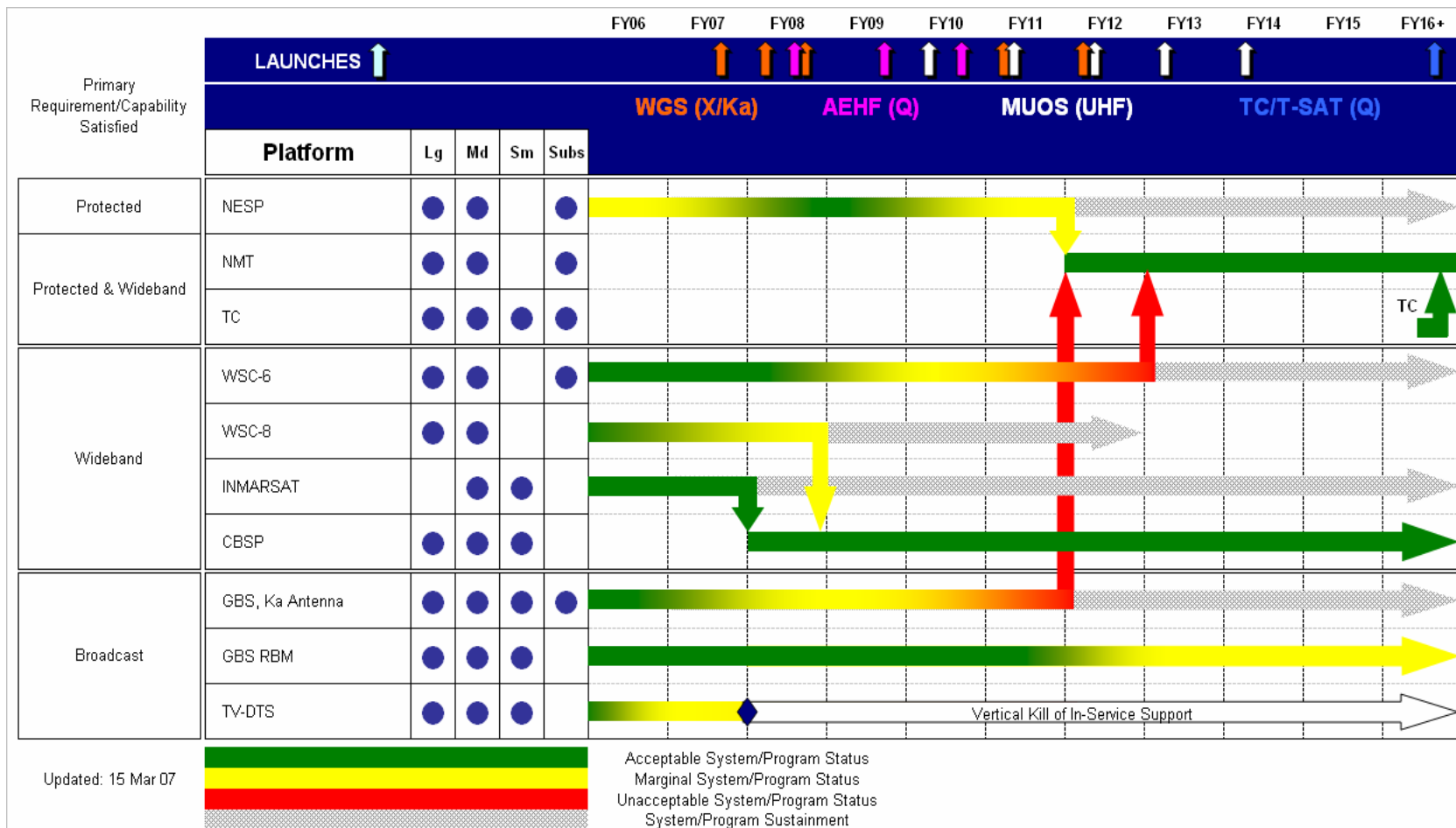
**INMARSAT**  
INMARSAT B HSD





# Navy SATCOM Roadmap

**Way Ahead:** Navy's intent for the future is to continue reliance on MILSATCOM. We plan to maintain the ability to use Commercial SATCOM as an augmentation to MILSATCOM.





# Considerations

## Requirements

- Architecture/Capability:
  - Latency
  - Peak and normal throughput
  - Geographic coverage
  - Security
- Cost:
  - Return on Investment
  - Contract strategies
- Schedule:
  - Acquisition rigor
  - Fielding cycle
- Performance:
  - Network limitations
  - Spectrum
  - Static vs. dynamic

## Challenges

- Environmental & other:
  - Shock
  - Vibration
  - Wind Loading
  - Green Water Loading
  - Topside blockage
  - Antenna Hand-over
  - Radar Cross-section
  - Antenna size/weight limitations
  - Ship Weight & Moment impact
  - Missile/Gun Blast
  - RADHAZ
  - Stack Gas Effects
  - Electromagnetic Compatibility
  - Training
  - Acquisition documentation
  - Satellite Coverage Areas

### End to end capabilities and limitations:

**Network**

**Encryption**

**Modem**

**Antenna**

**Space Segment**



# Navy COMMERSAT Acquisitions – Lessons Learned



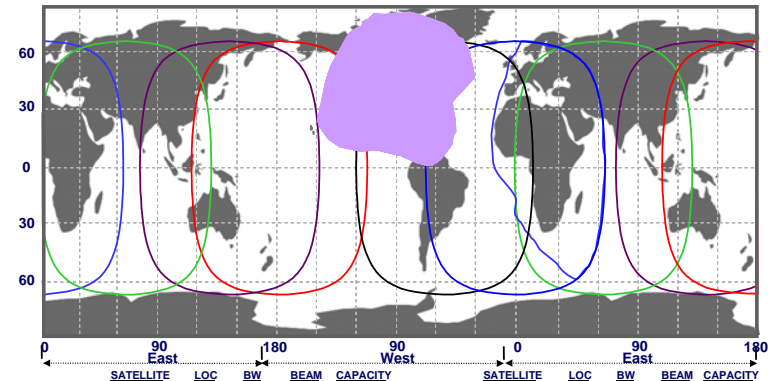
- The Navy has established a centralized requirements based commercial SATCOM program in CWSP and Inmarsat
  - Centralized organization for acquisition and operations
  - Established streamlined leasing and provisioning process
  - Single Program Manager for Commercial SATCOM program(s)
- End to End Performance-based competitive acquisitions
  - Contract for Consolidated Requirements Whenever Possible
- Don't try to duplicate organically what industry does
  - Navy uses Navy unique, COTS or modified COTS terminals for shipboard operations
- Looking to Industry for help
  - RFIs and draft RFPs



# Navy COMMERSAT Acquisitions – Looking forward



- Forecasting future needs for Commercial SATCOM with sufficient accuracy
- Satellite architecture solutions must provide for worldwide coverage
  - Blue water Navy requires open ocean and worldwide coverage
- Future Acquisition Approaches under consideration:
  - Dynamic modulation schemes (DAMA, DVB-RCS)
    - Stovepipe end-to-end architecture works
      - Transmission Security limitations currently drive this architecture
  - Lease Portability
  - Surge Pre-emptability
  - Greater Flexibility in Use
  - Multiple Terminal Types
  - Government to Government Terminations with Contractor Monitoring and Control
- Continuing to look for innovative leasing solutions, multi-band solutions, and reliable systems.





# Closing



- PEO C4I continues to look forward to working with Industry
- Navy SATCOM User's Workshop is a step towards better understanding of Navy requirements/challenges and Industry capabilities



# Navy Commercial SATCOM Points of Contact



**PMW 170 Program Manager:** CAPT John Pope

**PMW 170 Deputy Program Manager:** Vince Squitieri

**SATCOM Division Director:** Kai Tang

Please direct all inquiries to the Navy Communication Program  
Office: 619-524-7930

***PEOC4I.NAVY.MIL***



---

# Questions?